

BAY AREA GENEALOGICAL SOCIETY NEWSLETTER

December 2022
Volume 22
Issue 11



**Saturday, December 3rd, 2022
12:00pm**

Members Holiday Luncheon

South Shore Harbour Grille
2800 Marina Bay Dr, League City, TX 77573 .

The Holiday Luncheon will be held Saturday, December 3rd at 12:00pm at the South Shore Grille in League City. Reservations are required, and members will cover their own luncheon tabs.

Be sure to mark your calendar for our in-person January 28th meeting at University Baptist Church. This is our annual January luncheon to welcome the New Year and celebrate with fellow members!

The BAGS officers and board members would like to take this opportunity to wish each and every one a blessed holiday season! Please check this newsletter calendar or the BAGS website for December events.

Inside this issue

BAGS Member Information	2
BAGS Programs	3
BAGS Research Help	4
BAGS News	5
Library News	6
MHM Library Sessions	7
Puzzle & Other Events	8
BAGS Calendars	9

Special points of interest

*Research &
Learning Opportunities*
Seasonal Word Search
BAG Calendar At-A-Glance



**Allen County
Public Library**



Bay Area Genealogical Society
is proud to be members of the
National Genealogical Society,
Texas State Genealogical Society,
Clayton Library Friends
and the Allen County Public Library.

BAGS MEMBER INFORMATION

BAGS OFFICERS

President

Lisa Smith

president@txbayareagen.org

First Vice President

(vacant)

vicepresident@txbayareagen.org

Second Vice President

(vacant)

vicepresident2@txbayareagen.org

Treasurer

Susie Ganch

treasurer@txbayareagen.org

Registrar

George Porterfield

registrar@txbayareagen.org

Recording Secretary

Kitty Olson

recordingsec@txbayareagen.org

Corresponding Secretary

Teresa Rundell

correspondsec@txbayareagen.org

Newsletter Editor

Cindy Austin

newsletter@txbayareagen.org

Newsletter Proofreaders

Chester Karrick

Kim Zrubek

Photographer

Bill Mayo

Distributor

(Lisa Smith)

emailcoord@txbayareagen.org

Web Editors

Polly Swerdlin and

George Porterfield

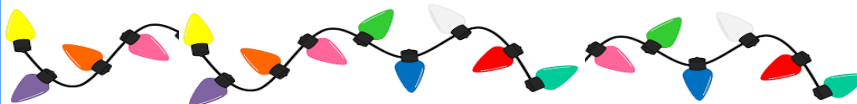
webeditor@txbayareagen.org

Renewals for the 2023 membership

online [here](#).

BAGS changed the membership year to coincide with the calendar year. Your current membership was extended through December 31, 2022.

MEMBERSHIP
RENEWAL
TIME



VOLUNTEER OPPORTUNITIES FOR 2023!

Please consider helping BAGS!:

- * 1st Vice President needed to preside temporarily when the President is unavailable
- * 2nd Vice President needed to oversee monthly programming

COACHING for these positions is AVAILABLE!!!

Additional points of contact:

Research questions or to provide research assistance:

education@txbayareagen.org (Kim Zrubek)

Submit information for the Journal, published twice yearly:

journal@txbayareagen.org (Todd Roberts)

Submit pedigree chart to share with membership:

pedigreecharts@txbayareagen.org (vacant)

Ideas on where or how to advertise BAGS:

publicity@txbayareagen.org (Terri Myers)

Not receiving emails?

emailcoord@txbayareagen.org (Lisa Smith)

Don't know the Members Page password?

registrar@txbayareagen.org (George Porterfield)

This newsletter is a monthly publication of the Bay Area Genealogical Society, a non-profit educational organization dedicated to the people of Harris and Galveston counties, Texas, who have an interest in genealogy. Articles on genealogy are welcome. Inclusion is based on space available and is subject to editing. Please include permissions with copyrighted material submissions. Questions or comments on the BAGS Newsletter should be addressed to: Editor, newsletter@txbayareagen.org. All rights reserved.

BAGS PROGRAMS & EVENTS

November General Meeting Recap



On Friday, November 18th, Diana Elder walked us through a puzzling scenario, "When no record names a father, discover how documentary records, a migration study, and DNA evidence can confirm a hypothesis in this pre-1850 case study." Diana says, "I like nothing more than to help my clients solve their family history mysteries!"

Elder is an Accredited Genealogist[®] certified in the Gulf South region of the United States and serves on the ICAPGen Commission as the presentation specialist. Diana is the author of **Research Like a Pro: A Genealogist's Guide** and co-authored **Research Like a Pro with DNA: A Genealogist's Guide to Finding and Confirming Ancestors with DNA Evidence**. Her eCourse and study group teaches the RLP process through learning modules and videos. Diana and her daughter, Nicole Dyer, share research tips on their website, Family Locket (<https://familylocket.com/>), and are the hosts of the Research Like a Pro Genealogy Podcast.

This presentation is available on the **Members Only** portion of the BAGS website, under [General Meetings and Handouts link](#).



BAGS Meet & Munch

Our November 6th Meet and Munch was well attended! Fifteen BAGS members and their families socialized and shared a delicious meal at Red River BBQ in November! The Meet & Munch gang will be taking a break for the month of December

Please consider joining us at our next Meet & Munch, **Sunday, January 15th at 4pm** at **Red River BBQ**, 1911 E Main in League City. Members, their family members and guests are invited!

Bay Area Genealogical Society offers in person, Zoom, and hybrid meetings for the 2022 and 2023 calendar year. Details for each BAGS event, along with registration links, are posted on the BAGS website, Facebook pages, and future newsletters.

Board Meetings

Are currently held as virtual meetings via Zoom. All members are welcome to attend. If you would like to attend a Board Meeting, request a link from info@txbayareagen.org

2023 Meetings

January 23

February 20

March 20

April 24

May 22



Board meetings are held on Mondays at 6:30 PM. [Board Meeting Minutes](#) are available on the Members Page

Clayton Library Research Trips

DEC 7th

If you'd like to catch the bus, please contact County Coordinator, [Kathleen Williams](#) to reserve your seat ASAP! **409-344-0567**

NEW Meeting Spot!!

**16616 Diana Lane,
Houston, TX**

BYO lunch, flash drive, and change for copying records. Dress in layers.

See details on future dates and to be included [HERE](#).





Family Tree Makers Special Interest Group!



Our very own Family Tree Maker guru, Renee Ball moderates this Special Interest Group for those want knowing how to use FTM, need a refresher course or anyone able to help others with FTM questions!

Monday afternoons, 1:00pm Registration [information here](#)

Possible topics: installation help, product discounts, latest features and updates, and syncing with Ancestry. Whether you're brand new to Family Tree Maker or a beloved FTM fan you are welcome to join us!

MHM Online Research Sessions (via Zoom)

If you need to brainstorm a research brick wall, gather suggestions, learn how to use online resources, ask questions, give help, or just visit with other genealogists, join one or both of the sessions, with or without video. Participants can share their screens and demonstrate recent research discoveries. The latest access details are posted on the BAGS [Members Helping Members Page](#).

Weekly: Mondays from 10:00 AM to 12:00 PM w/ hosts Renee Ball and George Porterfield

Weekly: Mondays from 7:00 PM to 8:00 PM join host Kim Zrubek.

If you want to practice using Zoom or have questions connecting to a session, contact Kim Zrubek by email education@txbayareagen.org or by phone 281-992-2636.

Bus Trips to Clayton Library!!

Mark your calendars! BAGS is continuing free bus trips to the Clayton Library in Houston are scheduled for the following dates:

December 7th January 11th February 22nd

Contact Kathleen Williams, 409-344-0567 or at countycoord@txbayareagen.org if you are interested in attending!

A minimum of **8 people** must be confirmed at least **2 weeks in advance**.

Please be sure to include your cell phone number to receive a reminder about the trip.



NEW Meeting Spot—in the parking lot at **Freeman Branch Library**, located at **16616 Diana Lane** at 9:15am. The bus arrives between 9:15 and 9:30 and departs promptly at **9:30am**. Bring a lunch to enjoy! Tables are available outside to sit, eat, and fellowship. Consider bringing a flash drive to save records, change (coins and dollar bills) for making copies. Dress in layers! The temperature can vary in the library. Traffic permitting, we'll return to Diana Lane by 4 p.m.

German Special Interest Group



The BAGS German SIG started their third year in October. Meetings are on the second Wednesday evening of each month, 7:00 – 8:30 pm via Zoom.



December 14 January 11 February 8

Anticipated topics for the coming year include identifying your German ancestor's hometown, learning more about your ancestor's hometown, German Script, German naming conventions and variations, Familienbuchs, church records, civil records, and more.

Please complete the [German SIG Interest Survey](#) if you are interested in joining this group!

For those members who may be interested in [International German Genealogy Partnership](#), please click on the link [here](#) to view the benefits of this group!

If you have questions you can contact [George Porterfield](#) for further information.

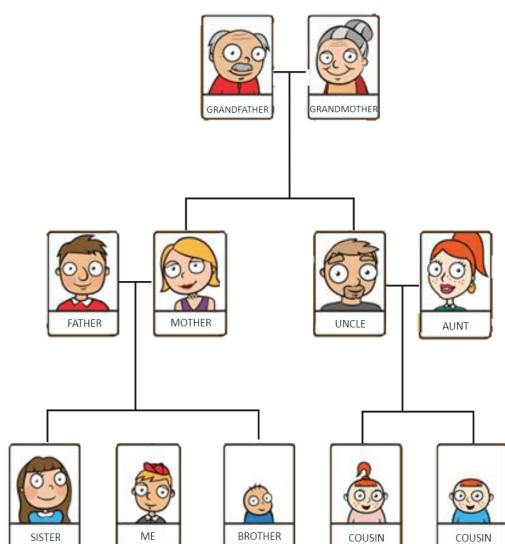
BAG\$ Treasurers Report

Statement of Activity for November

Checking Account	\$2,17165
Saving Account	\$11,863.27
PayPal Account	\$80.00
Total Monetary Assets	\$14,114.92



Renew online [here](#).



All BAGS members are encouraged to submit a **pedigree chart** of their family! The chart does not need to be complete and vital information about living relatives may be omitted. These charts are available for members to review on the [Members Only](#) page “Pedigree Charts of Our Members.”

Sharing your information can create a connection that may help other researchers! Submit your chart, volunteer help, ask questions, get assistance, and send emails to pedigree@txbayareagen.org

BAY AREA GENEALOGICAL SOCIETY JOURNAL

Do you have a story to tell of your ancestors? Consider sharing your methodology in cracking that familial question that has long been on your mind. The Society strives to have our members share their findings, tips, and methods applied to reach back to the next generation or find that lost uncle. Consider sharing by submitting one of your written records.



Todd Roberts, our Journal Editor, has composed a “[Journal Article Submissions Q & A](#)” answering some of the more common questions about submitting an article for print. Email your submissions to Todd at journal@txbayareagen.org or for additional information.

All Journal articles and Quarterlies are published and is available on the [Members Only](#) page of our website. Check out articles showcasing our society’s twenty years of growth!

WE NEED MEMBERS TO CONTRIBUTE ARTICLES!



LOCAL LIBRARY UPDATES

Helen Hall Library

BAGS Members-Only Research Sessions

TBD

2:00pm to 4:00pm

Board room, 100 W Walker St, League City, TX 77573.

Open only to BAGS members for research. Bring your own laptop and use their Wi-Fi or use one of their computers.



Friendswood Family History Center

BAGS Members-Only Research Sessions

Jan 18th

9:30am to 11:30am

The FHC library is located at **505 Deseret Dr**, in Friendswood. Entrance to the building on the side furthest from the street.

The center is open to the public for research:

Tues., Thur., & Fri. 10:00am - 12:00pm,

Tues. evenings 7:00pm - 9:00pm,

League City Family History Center

This FHC library is located at **4655 S. South Shore Blvd**, in League City. The Family History Center entrance is on the SE corner, at the back of the building, away from the street. Use the first entrance off South Shore Blvd.

The center is open to the public for research:

Tues. & Wed. evenings. 7:00pm – 9:00pm

Saturdays 10:00am – 12:00pm

Phone 713-445-6132



Clayton Library Center for Genealogical Research

HOURS – 10am to 5pm on Tues, Wed, Fri, and Sat

Noon to 7pm on Thurs

The library is now open fully for browsing and conducting research at tables during business hours. You are encouraged to wear a mask, but it is not required. Limited service is offered by either email requests to cla.reference@houston.tx.gov or phone (832) 393-2600.



Genealogy Face2Face Events (Zoom Video Conference)

Thu, Dec 1, 1:00 PM - 2:00 PM

[Holiday Heirlooms and Their Stories](#)

Clayton Library Staff

Thu, Jan 5, 1:00 PM - 2:00 PM

[Setting New Year's Genealogy Resolutions](#)

Jessica Collins – moderator

Thu, Feb 2, 1:00 PM - 2:00 PM

[Basic Scandinavian Research](#)

presented by Diana Smith

Thu, Mar 2, 1:00 PM - 2:00 PM

[Women's History Month, Show & Tell: Celebrating Our Resilient Women Ancestors](#)

To share your story email Carol Pena

programs@claytonlibraryfriends.org

Visit the library's website – <https://claytonlibraryfriends.org/events> for more details

Each program. requires pre-registration to attend.

Links to REGISTER your choice of events is included in each description.

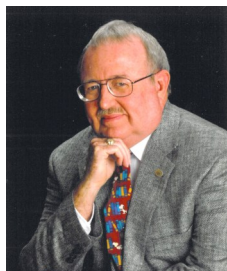
MHM LIBRARY SESSIONS

At the Friendswood Public Library and Virtually

Tuesday, December 6 at 2pm (in-person or virtually)

"Surname Distribution Maps: A Valuable Tool for Genealogical Research," (a TxSGS video presentation) by Bernard Meisner followed by a group discussion on the topic.

Learn how surname maps can enable you to determine where to look for your ancestors (both individuals and couples), explore variant spellings of their names, and perhaps identify their religion.



The presentation will help you to understand what factors to consider before using a surname map. In addition to a summary of the talk, attendees will also receive a comprehensive, annotated list of current surname maps web sites.

Bernard is a genealogist and lecturer based in the Dallas/Fort Worth Metroplex. He is a past president and current social media chair of the Mid-Cities Genealogical Society, and co-leader of the Dallas Genealogical Society's German Genealogy Group of North Texas.

Tuesday, January 10 at 2pm (in-person or connect virtually)

Two presentations. Tina LaFreniere will provide a live demonstration of [Related Faces](#) and Cindy Austin will provide a live demonstration of [Photomyne](#).



Related Faces uses artificial intelligence to scan your photos and isolate faces. Then those faces are compared with Related Faces database, returning pairings with photos from your own collection as well as others. These pairings can help you fill in the blanks of your photo mysteries as well as connect you with users who may have more details.



Photomyne offers high-quality photo scanning app with advanced management editing, and backup options. The company also offers Colorize app (creates colorized version of black and white photos), SlideScan app (Convert slides to digital photos), and FilmBox app (Convert film negatives to digital photos)

February TBD (in-person or virtual)

"Using Timelines to Focus Your Research" (a TxSGS video presentation) by Susan Ball followed by a group discussion on the topic.

The most important tool you can use to research your ancestor is a timeline. Learn how to construct a timeline for your ancestor and use it to uncover previously overlooked avenues for research.



A genealogist for over 30 years, Susan Ball is TxSGS president, co-editor of *Stirpes*, and president of the San Angelo Genealogical and Historical Society. A strong supporter of records abstraction and publication, Susan has compiled four books of genealogical records, three of which have won TSGS book awards including the coveted grand prize. She also serves her local society as editor of the SAGHS Newsletter and assistant editor of *Stalkin' Kin of Old West Texas*, the SAGHS biannual journal.

PUZZLES AND OTHER EVENTS

'Tis the Season

Advent	Angels
Bells	Bethlehem
Blitzen	Comet
Cranberry sauce	
Cupid	Dancer
Dasher	Donner
Dreidel	Eggnog
Elves	Family reunion
Fruitcake	Goodwill
Hanukkah	Holly
Holy	Menorah
Miracle	Mistletoe
Noel	North Pole
Plum pudding	
Poinsettia	Prancer
Presents	Pumpkin pie
Reindeer	Rudolph
Sacred	Santa
Scrooge	Season
Sled	Sleighbells
Snowflakes	Spirit
St. Nick	Star
Tidings	Tinsel
Toys	Tradition
Vixen	Winter
Worship	Wrapping paper
Wreath	Yuletide

O L V T L X V B V F E Y P O E G O F E G R P K N S
 E Z C D E F R O J U L M U P E I S K O S N I V O L
 G O N Q O A A P G O O B K S K J P N S Y P H A I E
 O J X S N D A S H E R M U Z N D G N K S Y S Z T I
 O V Y G O V R B R E N B F R L G T O I F W R W I G
 R U E N E E V E K E S K E T E M O C O K I O G D H
 C L N E Y N H A I E C C L W Y P U R F D P W H A B
 S E R B Q T C E O D N N O D R P E A R Y W M K R E
 R Q M R I T J T D A E J A E I L H N C V Q I U T L
 S C X N I I E B R I W L S D O U T B S Z B A L P L
 D N S U P L G P W N T E N P E M A E Y J M K L L S
 B E R P T J Y O E M N E H C T P E R E I N D E E R
 L F Y S P I R I T T D T L H H U R R U D O L P H W
 Q A I O F R B N S H R H A U J D W Y A Q Z O A T R
 P M N O S A E S A O H O L L Y D F S E D U S D Q A
 I I I K N G F E N D H A F V X I X A C W E A H M P
 C L P R C Z L T T E L H K C Q N I U O V F C A T P
 T Y D E A F E T A U Z S S K G G Z C L I S R R K I
 A R L T L C O I O V L T J H U P H E T X F E O T N
 N E U N E Y L A R Q J P I S T N I C K E L D N D G
 W U S I S V U E X O R J L L C S A C E N N A E T P
 S N O W F L A K E S S L L E B E T H L E H E M Y A
 V I P N C A E D D L T I D I N G S N E R I N F C P
 L O E W O M N G E S L A R U X V N T N S G H U E
 V N Z T P L C D L U F Z R F E S K T J U S W E P R

Puzzle created using Discovery Education's puzzle maker <http://puzzlemaker.discoveryeducation.com>

UPCOMING EVENTS



Tuesday, Jan 10th, 2:00 PM (Friendswood Public Library/ hybrid)

Related Faces presented by Tina LaFreniere

Photomyne presented by Cindy Austin

Saturday, Jan 28th, 12:00 PM (University Baptist Church)

Members Potluck Luncheon

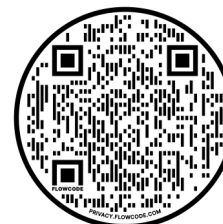
History of New York presented by Fred Roe



Follow us on BAGS Facebook

[Facebook Group \(members only\)](#)

[Facebook Page \(public page\)](#)



Conference Keeper

conferencekeeper.org/calendar

txbayareagen.org/

"The most complete Calendar and Collection of Genealogy Events on the Internet" Find lectures, classes, cruises, conferences, institutes all in one place. Look for informative sessions to broaden your knowledge and expand your skills. Interested in future virtual events? They have a calendar for that. conferencekeeper.org/virtual

December BAGS Calendar

SUNDAY	MONDAY	TUESDAY	WEDNESDAY	THURSDAY	FRIDAY	SATURDAY
				1)	2)	3
4)	5) <u>MHM Zoom #1</u> w/ Rene B & George P. 10:am <u>FTM SIG</u> w/Rene B 1pm <u>MHM Zoom #2</u> w/Kim Z. 7:00pm	6) TxSGS Video: Surname Distribution Maps: A Valuable Tool for Genealogical Research 2pm Friendswood Library	7) Clayton Library Bus Trip 9:15am	8)	9)	10)
11)	12) <u>MHM Zoom #1</u> w/ Rene B & George P. 10:am <u>FTM SIG</u> w/Rene B 1pm <u>MHM Zoom #2</u> w/Kim Z. 7:00pm	13)	14) <u>German SIG</u> 7pm w/ George Porterfield	15)	16)	17)
18)	19) <u>MHM Zoom #1</u> w/ Rene B & George P. 10:00am <u>FTM SIG</u> w/Rene B 1pm <u>MHM Zoom #2</u> w/Kim Z. 7:00pm	20)	21)	22)	23)	24
25) MERRY CHRISTMAS	26)	27)	28)	29)	30)	31) Happy New Year's Eve





BAGS - Bay Area Genealogical Society

For the latest news and event updates,
visit our website at tbbayareagen.org



1 December 2022

Calendar of Events - 2022-2023

DECEMBER 2022

- 3 1:00p Clayton Library Face2Face
Holiday Heirlooms & Their Stories
12:00p December Members Holiday Social
The South Shore Harbour Grill
5 10:00a Members Helping Members #1
1:00p Family Tree Maker SIG
7:00p Members Helping Members #2
6 2:00p Educational Session, Friendswood
Library: *Surname Distribution Maps: A Valuable Tool (in person)*
7 9:15a Clayton Library Bus Trip
12 10:00a Members Helping Members #1
1:00p Family Tree Maker SIG
7:00p Members Helping Members #2
14 7:00p German SIG
19 10:00a Members Helping Members #1
1:00p Family Tree Maker SIG
7:00p Members Helping Members #2

JANUARY 2023

- 2 10:00a Members Helping Members #1
1:00p Family Tree Maker SIG
7:00p Members Helping Members #2
9 10:00a Members Helping Members #1
1:00p Family Tree Maker SIG
7:00p Members Helping Members #2
10 2:00p Educational Session, Friendswood
Library: *Related Faces & Photomyne*
11 9:15a Clayton Library Bus Trip
7:00p German SIG
12 9:15a Clayton Library Bus Trip
16 10:00a Members Helping Members #1
1:00p Family Tree Maker SIG
7:00p Members Helping Members #2
18 9:30a MHM, Friendswood FHC
23 10:00a Members Helping Members #1
1:00p Family Tree Maker SIG
6:30p BAGS Board Meeting
28 12:00p January Members Meeting (in-person)
Members Potluck Luncheon
History of New York, Fred Roe
30 10:00a Members Helping Members #1
1:00p Family Tree Maker SIG
7:00p Members Helping Members #2

FEBRUARY 2023

- 6 10:00a Members Helping Members #1

- 1:00p Family Tree Maker SIG
7:00p Members Helping Members #2
8 7:00p German SIG
13 10:00a Members Helping Members #1
1:00p Family Tree Maker SIG
7:00p Members Helping Members #2
15 9:30a MHM, Friendswood FHC
20 10:00a Members Helping Members #1
1:00p Family Tree Maker SIG
6:30p BAGS Board Meeting
22 9:15a Clayton Library Bus Trip
24 7:00p February Members Meeting (live virtual)
Location of Hidden Records, Carl Taplin
27 10:00a Members Helping Members #1
1:00p Family Tree Maker SIG
7:00p Members Helping Members #2

MARCH 2023

- 6 10:00a Members Helping Members #1
1:00p Family Tree Maker SIG
7:00p Members Helping Members #2
8 7:00p German SIG
13 10:00a Members Helping Members #1
1:00p Family Tree Maker SIG
7:00p Members Helping Members #2
20 10:00a Members Helping Members #1
1:00p Family Tree Maker SIG
6:30p BAGS Board Meeting
24 7:00p March Members Meeting
27 10:00a Members Helping Members #1
1:00p Family Tree Maker SIG
7:00p Members Helping Members #2

APRIL 2023

- 3 10:00a Members Helping Members #1
1:00p Family Tree Maker SIG
7:00p Members Helping Members #2
10 10:00a Members Helping Members #1
1:00p Family Tree Maker SIG
7:00p Members Helping Members #2
12 7:00p German SIG
17 10:00a Members Helping Members #1
1:00p Family Tree Maker SIG
7:00p Members Helping Members #2
24 10:00a Members Helping Members #1
1:00p Family Tree Maker SIG
6:30p BAGS Board Meeting
28 7:00p APRIL Members Meeting