

BAY AREA GENEALOGICAL SOCIETY NEWSLETTER

November 2022
Volume 22
Issue 10



November Members Meeting
LIVE Virtual



Friday, November 18, 2022 at 7pm

Who's Her Daddy?
**Testing an Ancestry DNA ThruLine
Hypothesis for a Female Ancestor**
by Diana Elder

Diana Elder is an Accredited Genealogist® certified in the Gulf South region of the United States and serves on the ICAPGen Commission as the presentation specialist. Diana is the author of **Research Like a Pro: A Genealogist's Guide** and co-authored **Research Like a Pro with DNA: A Genealogist's Guide to Finding and Confirming Ancestors with DNA Evidence**. Her eCourse and study group teaches the RLP process through learning modules and videos. Diana and her daughter, Nicole Dyer, share research tips on their website, Family Locket (<https://familylocket.com/>), and are the hosts of the Research Like a Pro Genealogy Podcast.

A lifelong learner and educator, with a degree in education from BYU, Diana combines her passion for teaching and genealogy. She teaches at genealogy conferences like RootsTech and the NGS Conference. She also presents webinars and seminars to local genealogy societies throughout the United States. Elder is member of NGS, the Utah Genealogical Society, and the Association of Professional Genealogists,

Elder will walk us through the puzzling scenario, "When no record names a father, you will discover how documentary records, a migration study, and DNA evidence can confirm a hypothesis in this pre-1850 case study." Diana says, "I like nothing more than to help my clients solve their family history mysteries!"

Inside this issue

BAGS Member Information	2
BAGS Programs	3
BAGS Research Help	4
BAGS News	5
Library News	6
Members Miscellaneous	7
Puzzle & Other Events	8
BAGS Calendars	9

Special points of interest

- *Research & Learning Opportunities*
- *Genealogy Word Search*
- *BAG Calendar At-A-Glance*

BAGS MEMBER INFORMATION

BAGS OFFICERS

2021-2023

President

Lisa Smith

president@txbayareagen.org

First Vice President

Jane Martin

vicepresident@txbayareagen.org

Second Vice President

(vacant)

vicepresident2@txbayareagen.org

Treasurer

Susie Ganch

treasurer@txbayareagen.org

Registrar

George Porterfield

registrar@txbayareagen.org

Recording Secretary

Kitty Olson

recordingsec@txbayareagen.org

Corresponding Secretary

Teresa Rundell

correspondsec@txbayareagen.org

Newsletter Editor

Cindy Austin

newsletter@txbayareagen.org

Newsletter Proofreaders

Chester Karrick

Kim Zrubek

Photographer

Bill Mayo

Distributor

(Lisa Smith)

emailcoord@txbayareagen.org

Web Editors

Polly Swerdlin and

George Porterfield

webeditor@txbayareagen.org

welcome
Our New Members

* Shera LaPoint

**MEMBERSHIP
RENEWAL
TIME**

BAGS changed the membership year to coincide with the calendar year. Your current membership was extended through 12-31-2022.

Renewals for the 2023 membership year will be accepted beginning Nov. 1st. You may renew online [here](#).

VOLUNTEER OPPORTUNITIES!

Please consider helping BAGS!:

2nd Vice President needed to oversee monthly programming

Pedigree Chart Coordinator needed to help members with pedigrees and updating the BAGS Surname Project

Additional points of contact:

Need help attending the next meeting?

memberservices@txbayareagen.org (Lisa Smith)

Research questions or to provide research assistance:

education@txbayareagen.org (Kim Zrubek)

Submit information for the Journal, published twice yearly:

journal@txbayareagen.org (Todd Roberts)

Submit pedigree chart to share with membership:

pedigreecharts@txbayareagen.org (vacant)

Ideas on where or how to advertise BAGS:

publicity@txbayareagen.org (Terri Myers)

Not receiving emails?

emailcoord@txbayareagen.org (Lisa Smith)

Don't know the Members Page password?

registrar@txbayareagen.org (George Porterfield)

This newsletter is a monthly publication of the Bay Area Genealogical Society, a non-profit educational organization dedicated to the people of Harris and Galveston counties, Texas, who have an interest in genealogy. Articles on genealogy are welcome. Inclusion is based on space available and is subject to editing. Please include permissions with copyrighted material submissions. Questions or comments on the BAGS Newsletter should be addressed to: Editor, P.O. Box 590853, Houston, TX 77259-0853, or newsletter@txbayareagen.org. All rights reserved.

BAGS PROGRAMS & EVENTS

October General Meeting Recap



On Friday, October 28th, Shera LaPoint provided an outstanding Zoom presentation entitled, *Law Enforcement Use of Genetic Genealogy*. LaPoint is a professional genealogist (The Gene Hunter, LLC) and a popular genealogical and DNA lecturer. Shera focuses on helping adoptees and people of unknown parentage find their families. She's completed over 80 such adoptee cases after many families spent lifetimes trying to figure them out. Inspired and substantiated by the recent success of an unsolved cold case, "The Killing Fields," she was able to assist [Texas authorities in identifying two victims in decades-old "Killing Fields" murders using genetic genealogy](#). LaPoint learned that as a genetic genealogist, you can take genealogy techniques to the next level. Shera is currently consulting on three active, unidentified person cases, has attended the Harris County Topics in Forensic Sciences Conference, and has completed Excelsior College's online Genetic Genealogy curriculum. She was recently awarded the League City Texas Police Departments Chief's Coin of Excellence for Outstanding Performance for her genealogical assistance to Detective Recie Tisdale in the Donna Gonsoulin Prudhomme case.

This presentation is available on the **Members Only** portion of the BAGS website, under [General Meetings and Handouts link](#).



BAGS Meet & Munch

Our October 23rd Meet and Munch was well attended! More than a dozen BAGS members and their families socialized and shared a delicious meal!

Please consider joining us at our next Meet & Much, this **Sunday, November 6th at 4pm** at **Red River BBQ**, 1911 E Main St B, League City, TX 77573 in League City. Members, their family members and guests are invited!

Bay Area Genealogical Society offers in person, Zoom, and hybrid meetings for the 2022 and 2023 calendar year. Details for each BAGS event, along with registration links, are posted on the BAGS website, Facebook pages, and future newsletters.

Board Meetings

Currently held as virtual meetings via ZOOM. All members are welcome to attend. If you would like to attend a Board Meeting, request a link from info@txbayareagen.org

2022 Meetings

November 14



Board meetings are held on Mondays at 6:30 PM. [Board Meeting Minutes](#) are available on the Members Page

Clayton Library Research Trips

NOVEMBER 9th
DECEMBER 7th

If you'd like to catch the bus, please contact County Coordinator, [Kathleen Williams](#) to reserve your seat ASAP! **409-344-0567**

Meet at:

16511 Diana Lane, Houston, TX BYO lunch, flash drive, and coins/dollar bills for copying records. Dress in layers.

See details on future dates and to be included [HERE](#).





Family Tree Makers Special Interest Group!



Our very own Family Tree Maker guru, Renee Ball moderates this Special Interest Group for those want knowing how to use FTM, need a refresher course or anyone able to help others with FTM questions!

Monday afternoons, 1:00pm Registration [information here](#)

Possible topics: installation help, product discounts, latest features and updates, and syncing with Ancestry. Whether you're brand new to Family Tree Maker or a beloved FTM fan you are welcome to join us!

MHH Online Research Sessions (via ZOOM)

If you need to brainstorm a research brick wall, gather suggestions, learn how to use online resources, ask questions, give help, or just visit with other genealogists, join one or both of the sessions, with or without video. Participants can share their screens and demonstrate recent research discoveries. The latest access details are posted on the BAGS [Members Helping Members Page](#).

Weekly: Mondays from 10:00 AM to 12:00 PM w/ hosts Renee Ball and George Porterfield
Weekly: Mondays from 7:00 PM to 8:00 PM join host Kim Zrubek.

If you want to practice using Zoom or have questions connecting to a session, contact Kim Zrubek by email education@txbayareagen.org or by phone 281-992-2636.

Bus Trips to Clayton Library!!

Mark your calendars! BAGS is continuing free bus trips to the Clayton Library in Houston are scheduled for the following dates:

Wednesday, November 9th

Wednesday December 7th

Contact [Kathleen Williams](#) ASAP at 409-344-0567 or at countycoord@txbayareagen.org if you are interested in attending!

A minimum of **10 people** must be confirmed at least **2 weeks in advance**.

Please be sure to **include your cell phone number** to receive a reminder about the trip.

Meet in the parking lot at *Clear Lake City Sports and Recreation Complex*, located **16511 Diana Lane at 9:15am**. The bus arrives between 9:15 and 9:30 and departs promptly at **9:30am**. Bring a lunch to enjoy! Tables are available outside to sit, eat, and fellowship. Consider bringing a flash drive to save records, change (coins and dollar bills) for making copies. Dress in layers! The temperature can vary in



German Special Interest Group



The BAGS German SIG started their third year in October. Meetings are on the second Wednesday evening of each month, 7:00—8:30 pm via ZOOM.

November 9

December 14

January 11



Anticipated topics for the coming year include identifying your German ancestor's hometown, learning more about your ancestor's hometown, German Script, German naming conventions and variations, Familienbuchs, church records, civil records, and more.

Please complete the [German SIG Interest Survey](#) if you are interested in joining this group!

NOVEMBER we continue with... !

Member Pedigree Chart Submissions

All members are encouraged to submit a pedigree chart of their family! The chart does not need to be complete and vital information about living relatives may be omitted. These charts are available for members to review on the [Members Only](#) page "Pedigree Charts of Our Members."

Sharing your information can create a connection that may help other researchers! Submit your chart, volunteer help, ask questions, get assistance, and send emails to pedigree@txbayareagen.org



BAY AREA GENEALOGICAL SOCIETY JOURNAL

Do you have a story to tell of your ancestors? Consider sharing your methodology in cracking that familial question that has long been on your mind. The society strives to have our members share their findings, tips, and methods applied to reach back to the next generation or find that lost uncle. Consider sharing by submitting one of your written records.

Todd Roberts, our Journal Editor, has composed a "[Journal Article Submissions Q & A](#)" answering some of the more common questions about submitting an article for print. Email your submissions to Todd at journal@txbayareagen.org or for additional information.

All Journal articles and Quarterlies are published and is available on the [Members Only](#) page of our web-site. Check out articles showcasing our society's twenty years of growth!



WE NEED MEMBERS TO CONTRIBUTE ARTICLES!



Renew your
2023 BAGS
membership
TODAY

Renew online [here](#).

BAG\$ Treasurers Report

Statement of Activity for October

Checking Account	\$2,169.59
Saving Account	\$11,862.26
Total Monetary Assets	\$14,031.85

LOCAL LIBRARY UPDATES



Helen Hall Library

BAGS Members-Only Research Sessions

**Nov 6th,
2:00pm to 4:00pm**

Board room, 100 W Walker St, League City, TX 77573.
Open only to BAGS members for research. Bring your own laptop and use their Wi-Fi or use one of their computers.



Friendswood Family History Center

BAGS Members-Only Research Sessions

**Nov 16th, & Dec 21st
9:30am to 11:30am**

The FHC library is located at **505 Deseret Dr**, in Friendswood. Entrance to the building on the side furthest from the street.

The center is open to the public for research:
Tues., Thur., & Fri. 10:00am - 12:00pm,
Tues. evenings 7:00pm - 9:00pm,

League City Family History Center

This FHC library is located at **4655 S. South Shore Blvd**, in League City. The Family History Center entrance is on the SE corner, at the back of the building, away from the street. Use the first entrance off South Shore Blvd.

The center is open to the public for research:
Tues. & Wed. evenings. 7:00pm – 9:00pm
Saturdays 10:00am – 12:00pm
Phone 713-445-6132



Clayton Library Center for Genealogical Research

**HOURS – 10am to 5pm on Tues, Wed, Fri, and Sat
Noon to 7pm on Thurs**

The library is now open fully for browsing and conducting research at tables during business hours. You are encouraged to wear a mask, but it is not required. Limited service is offered by either email requests to cla.reference@houston.tx.gov or phone (832) 393-2600.



Genealogy Face2Face Events (Zoom Video Conference)

Thu, Nov 3,	1:00 PM - 2:00 PM	<u>Discussion of Family History Month at the Clayton</u> Clayton Library Staff
Thu, Dec 1,	1:00 PM - 2:00 PM	<u>Holiday Heirlooms and Their Stories</u> Clayton Library Staff

Clayton Library Presents

Sat, Nov 19,	10:30 PM - 12:00 PM	<u>Courthouse Research</u> by John Sellers Clayton Library Friends Annual Meeting November 2022
--------------	---------------------	--

Visit the library's website – <https://claytonlibraryfriends.org/events> for more details

Each program. Requires pre-registration to attend.

The links to REGISTER your choice of events is included in each description.

MEMBERS MISCELLANEOUS

This holiday season, have fun discussing the following questions around the dinner table with family and friends.

~ from the book *Burn After Reading* by Sharon Jones.



- As a child, who did you dream of becoming?
- What posters were on your bedroom walls growing up?
- What was the single most profound act of kindness you will never forget?
- Which historical people do you admire or are inspired by?
- What items did you collect as a child?
- What are five things you have tried and will never do again?
- What are some of your favorite things such as top five songs, concerts, books, movies, cities (travel), or experiences?
- What things that make you laugh?
- What is your most treasured possession?



2022 Texas State Genealogical Society Family History Conference November 4-5, 2022

Virtual!

2022 TxSGS Family History Conference

10 Presentations with
Q&A by Speakers

32 On-Demand Recordings

Bonus Recordings
and More!

Accessible for replay
through February 6, 2023

UNLOCK Your Past

November 4-5, 2022

2022 TxSGS Family History Conference

www.TxSGS.org #txsgs

Join us for the 2022 TxSGS Family History Conference, where we focus on [*Unlocking Your Past!*](#) This event remains virtual due to lingering pandemic challenges. The TxSGS LIVE, seeks to help hundreds of attendees discover the tools needed to answer genealogy questions. Featuring 24 speakers presenting 42 sessions, the TxSGS Family History Conference promises opportunities for learning in a variety of areas!



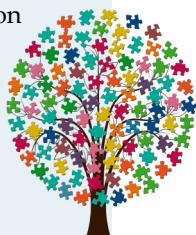
Bay Area Genealogical Society is proud to be
members of the
National Genealogical Society and the
Texas State Genealogical Society



PUZZLES AND OTHER EVENTS

1600s Thanksgiving Terms

Alliance	America
Autumn	Blessings
Celebration	Colonists
Epidemic	Faith
Famine	Feast
Gathering	Harvest
Health	Holiday
Jamestown	Massasoit
Mayflower	Narragansett
New England	New World
November	Patuxet
Pilgrim	Plymouth
Proclamation	Puritan
Squanto	Thankful
Turkey	Virginia
Wampanoag	Venison



H S Y H R Z T G P V E J W A Z E I C V L S A Y C P
T A V K O V C S T C A A O S L W G U G P I A S R
L T G N K L T E A G O M A E Y Y L F N R I G L Q M
D B E B A S I Y E E Q E M N Q P K I L W L V H D G
Z P H S E T K D C H F S Z T C N S Y B O G V Z N G
C B A V N L I V A N Y T W Q A S B H J O R J S A A
C N R O K A G R L Y V O P H E C C G Y T I X J L Q
V A B W Z H G Q U T Z W T L R C Y W S N M O X G J
H Y X Z Z J X A C P Y N B C E L E B R A T I O N G
A N O V E M B E R H E A L T H X B E O U F U Y E N
X C I Z R P R S R R C O O V N F Q P Q Q E F X W I
B X I N S Y A Z F F A H Y M L A C I R S B U T E R
O C F R H G U T A S B N Q F B T S D P G I R P N E
J B F F E I R I U Y N Z V A L V F E C U H L M K H
E D W W S M T X M X D R Q I M C I M Z U Y Y D W T
P I Z V B H A A C C E X Z N R J U I Z M P L W A A
E N I M A F S A Q O Z T R F R G H C O C R T M M G
N B E N D S R E W O L F Y A M R I U J O G M C P A
J C Q D A T U R K E Y O V H X M T N W Z V Q N A I
O K M S W N F D P U Z X N D M H O W I E S T M N N
Q N O I T A M A L C O R P I C T E N N A X H U O H
X I C L M W L P Q I B R W X S N K I W Y T Q T A M
T X P S W A C E C N A I L L A T S S F I X H U G J
N V L G Y M S H W M D T A X R O S P L M Z S A V O
Q J B Y M R J Z Y W Q Q S I N C N I H Q I U M N K

Puzzle created using Discovery Education's puzzle maker <http://puzzlemaker.discoveryeducation.com>



UPCOMING EVENTS

Thursday Dec 1st, 1:00 PM (Clayton Library virtual)

Holiday Heirlooms and Their Stories

sponsored and presented by Clayton Library Friends

Saturday, Dec 3rd, 12:00pm (in person)

BAGS December Members Holiday Social

The South Shore Harbour Grill

Tuesday Dec 6th, 2:00 PM (Friendswood Public Library / hybrid)

Surname Distribution Maps: A Valuable Tool for Genealogical

Research *presented by Bernard Meisner*

Tuesday, Jan 10th, 2:00 PM (Friendswood Public Library / hybrid)

Related Faces *presented by Tina LaFreniere*

Photomyne *presented by Cindy Austin*

Saturday, Jan 28th, 12:00 PM (University Baptist Church)

Members Potluck luncheon — details to follow

History of New York *presented by Fred Roe*

Conference Keeper

conferencekeeper.org/calendar

"The most complete Calendar and Collection of Genealogy Events on the Internet"

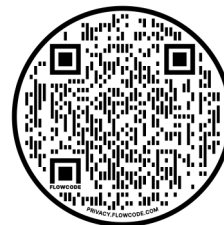
Find lectures, classes, cruises, conferences, institutes all in one place. Look for informative sessions to broaden your knowledge and expand your skills. Interested in future virtual events? They have a calendar for that. conferencekeeper.org/virtual



BAGS Facebook

[Facebook Group \(members only\)](#)

[Facebook Page \(public page\)](#)



txbayareagen.org/

NOVEMBER BAGS calendar

SUNDAY	MONDAY	TUESDAY	WEDNESDAY	THURSDAY	FRIDAY	SATURDAY
		1)	2)	3) <u>CLF Face2Face</u> Reference & Research 1pm <i>Zoom</i>	4)	5)
6) <u>MHM #3</u> Hellen Hall Library 2pm <u>Meet and Munch @</u> <i>Red River BBQ</i> 4pm	7) <u>MHM Zoom #1</u> w/ Rene B & George P. 10:am <u>FTM SIG</u> w/ Rene B 1pm <u>MHM Zoom #2</u> w/ Kim Z. 7:00pm	8)	9) Clayton Library Bus Trip 9:15am <u>German SIG</u> 7pm w/ George Porterfield	10)	11)	12)
13)	14) <u>MHM Zoom #1</u> w/ Rene B & George P. 10:am <u>FTM SIG</u> w/ Rene B 1pm <u>BAGS Board Meeting</u> 6:30pm	15)	16) <u>MHM</u> Friendswood Family History Center <i>in person</i> 9:30am	17)	18) <u>November</u> <u>Members Meeting</u> 7pm, <i>Zoom</i> "Who's Her Daddy? w/ Di- ana Elder	19)
20)	21) <u>MHM Zoom #1</u> w/ Rene B & George P. 10:00am <u>FTM SIG</u> w/ Rene B 1pm <u>MHM Zoom #2</u> w/ Kim Z. 7:00pm	22)	21)	24) <i>Happy Thanksgiving!</i>	25)	26)
27)	28)	29)	30)	31)		



BAGS - Bay Area Genealogical Society

For the latest news and event updates,
visit our website at txbayareagen.org



1 November 2022

Calendar of Events - 2022-2023

NOVEMBER 2022

- | | | |
|----|--------|---|
| 3 | 1:00p | Clayton Library Face2Face
<i>Discussion of Family History Month</i> |
| 6 | 2:00p | MHM, Helen Hall Library |
| | 4:00p | Meet & Munch, Red River BBQ |
| 7 | 10:00a | Members Helping Members #1 |
| | 1:00p | Family Tree Maker SIG |
| | 7:00p | Members Helping Members #2 |
| 9 | 9:15a | Clayton Library Bus Trip |
| | 7:00p | German SIG |
| 14 | 10:00a | Members Helping Members #1 |
| | 1:00p | Family Tree Maker SIG |
| | 6:30p | BAGS Board Meeting |
| 16 | 9:30a | MHM, Friendswood FHC |
| 18 | 7:00p | November Members Meeting
<i>Who's Her Daddy? Testing and
Ancestry DNA ThruLine Hypothesis for a
Female Ancestor (live virtual)</i> |
| 19 | 10:30a | Clayton Library Annual Meeting
<i>Courthouse Research</i> |
| 21 | 10:00a | Members Helping Members #1 |
| | 1:00p | Family Tree Maker SIG |
| | 7:00p | Members Helping Members #2 |

DECEMBER 2022

- | | | |
|----|--------|--|
| 3 | 1:00p | Clayton Library Face2Face
<i>Holiday Heirlooms & Their Stories</i> |
| | 12:00p | December Members Holiday Social
<i>The South Shore Harbour Grill</i> |
| 5 | 10:00a | Members Helping Members #1 |
| | 1:00p | Family Tree Maker SIG |
| | 7:00p | Members Helping Members #2 |
| 6 | 2:00p | Educational Session, Friendswood
Library: <i>Surname Distribution Maps: A
Valuable Tool (in person)</i> |
| 7 | 9:15a | Clayton Library Bus Trip |
| 12 | 10:00a | Members Helping Members #1 |
| | 1:00p | Family Tree Maker SIG |
| | 7:00p | Members Helping Members #2 |
| 14 | 7:00p | German SIG |
| 19 | 10:00a | Members Helping Members #1 |
| | 1:00p | Family Tree Maker SIG |
| | 7:00p | Members Helping Members #2 |

JANUARY 2023

- | | | |
|----|--------|--|
| 2 | 10:00a | Members Helping Members #1 |
| | 1:00p | Family Tree Maker SIG |
| | 7:00p | Members Helping Members #2 |
| 9 | 10:00a | Members Helping Members #1 |
| | 1:00p | Family Tree Maker SIG |
| | 7:00p | Members Helping Members #2 |
| 10 | 2:00p | Educational Session, Friendswood
Library: <i>Related Faces & Photomyne</i> |
| 11 | 7:00p | German SIG |
| 12 | 9:15a | Clayton Library Bus Trip |
| 16 | 10:00a | Members Helping Members #1 |
| | 1:00p | Family Tree Maker SIG |
| | 7:00p | Members Helping Members #2 |
| 18 | 9:30a | MHM, Friendswood FHC |
| 23 | 10:00a | Members Helping Members #1 |
| | 1:00p | Family Tree Maker SIG |
| | 6:30p | BAGS Board Meeting |
| 28 | 12:00p | January Members Meeting (in-person)
<i>Members Potluck Luncheon
History of New York, Fred Roe</i> |
| 30 | 10:00a | Members Helping Members #1 |
| | 1:00p | Family Tree Maker SIG |
| | 7:00p | Members Helping Members #2 |

FEBRUARY 2023

- | | | |
|----|--------|---|
| 6 | 10:00a | Members Helping Members #1 |
| | 1:00p | Family Tree Maker SIG |
| | 7:00p | Members Helping Members #2 |
| 8 | 7:00p | German SIG |
| 13 | 10:00a | Members Helping Members #1 |
| | 1:00p | Family Tree Maker SIG |
| | 7:00p | Members Helping Members #2 |
| 20 | 10:00a | Members Helping Members #1 |
| | 1:00p | Family Tree Maker SIG |
| | 6:30p | BAGS Board Meeting |
| 24 | 7:00p | February Members Meeting (live virtual)
<i>Location of Hidden Records, Carl Taplin</i> |
| 27 | 10:00a | Members Helping Members #1 |
| | 1:00p | Family Tree Maker SIG |
| | 7:00p | Members Helping Members #2 |