

# BAY AREA GENEALOGICAL SOCIETY NEWSLETTER



## April Member Meeting

**LIVE In-Person**



**Saturday, April 23, 2022 at Noon**

***Tips and Tricks with Potluck dinner***

**Meet at the University Baptist Church located at  
16106 Middlebrook Drive, Houston, TX 77059 (Clear Lake City)  
in the Chapel on the first floor. ([online map](#))**

(photo—BAGS August 2019 potluck )

April is International Volunteer Month and we are celebrating our members and other genealogists and historians that freely give their time and talents. Come celebrate with cake, share a potluck meal and listen to BAGS members present tips and tricks. If you would like to share a genealogy tip or trick to the group (under 10 minutes), please contact Polly Swerdlin at [webeditor@txbayareagen.org](mailto:webeditor@txbayareagen.org) to sign up. Topic suggestions are Interesting Websites; Genealogy Charts and Forms; Genealogy Organization; What to take to the Cemetery; Cleaning Headstones; Using Wiki Tree; Maps; using Google for Genealogy; Free Genealogy Kindle books on Amazon.

We will meet in the Chapel located on the first floor at the University Baptist Church located in Clear Lake City. Park in the lot nearest to Middlebrook Drive and use the entrance facing that street. The Society will provide drinks. Members are invited to bring an entree, side dish or a salad. Please remember to bring serving utensils.

Begin arriving at 11:30am to set out food dishes and the program starts at 12:00pm.

**Next meeting is a live virtual program: Friday May 27 at 7pm**  
**Diane Warmesley presents *The People of the West Indies and Their History***

**If you are not receiving our emails and wish to, please write to**  
**[EmailCoord@txbayareagen.org](mailto:EmailCoord@txbayareagen.org)**

### Inside this issue

Welcome New Members.....	2
BAGS Programs .....	3
BAGS April-May Calendar ...	4
BAGS MHM & SIGs.....	6
BAGS News .....	7
Library News.....	8
1950 Census.....	9
Puzzle & Other Events.....	10

### Special points of interest

- *Research & Learning Opportunities*
- *Genealogy Word Search*

**BAGS OFFICERS  
2021-2023**

**President  
Lisa Smith**

[President@TxBayAreaGen.org](mailto:President@TxBayAreaGen.org)

**First Vice President  
Jane Martin**

[VicePresident@TxBayAreaGen.org](mailto:VicePresident@TxBayAreaGen.org)

**Second Vice President  
(vacant)**

[VicePresident2@TxBayAreaGen.org](mailto:VicePresident2@TxBayAreaGen.org)

**Treasurer  
Susie Ganch**

[Treasurer@TxBayAreaGen.org](mailto:Treasurer@TxBayAreaGen.org)

**Registrar  
George Porterfield**

[Registrar@TxBayAreaGen.org](mailto:Registrar@TxBayAreaGen.org)

**Recording Secretary  
Kitty Olson**

[RecordingSec@TxBayAreaGen.org](mailto:RecordingSec@TxBayAreaGen.org)

**Corresponding Secretary  
Teresa Rundell**

[CorrespondSec@TxBayAreaGen.org](mailto:CorrespondSec@TxBayAreaGen.org)

**NEWSLETTER STAFF**

**Editor  
Kim Zrubek for  
Rebecca "Becky" Jones**

[Newsletter@TxBayAreaGen.org](mailto:Newsletter@TxBayAreaGen.org)

**Proofreader  
Chester Karrick  
Kim Zrubek**

**Photographer  
Bill Mayo**

**Distributor  
(vacant/Lisa Smith)**

[Emailcoord@TxBayAreaGen.org](mailto:Emailcoord@TxBayAreaGen.org)

**Web Editors  
Polly Swerdlin and  
George Porterfield**

[Webeditor@TxBayAreaGen.org](mailto:Webeditor@TxBayAreaGen.org)

**WELCOME NEW MEMBERS**



**Eunice Weatherholt**

**Lara Alves**

**Hattie McKinley**

**Patricia Miller**

**Additional points of contact:**

**Need help attending the next meeting?**

[Memberservices@TxBayAreaGen.org](mailto:Memberservices@TxBayAreaGen.org) (Lisa Smith)

**Research questions or to provide research assistance:**

[Education@TxBayAreaGen.org](mailto:Education@TxBayAreaGen.org) (Kim Zrubek)

**Submit information for the Journal, published twice**

**a year: [Journal@TxBayAreaGen.org](mailto:Journal@TxBayAreaGen.org) (Todd Roberts)**

**Submit pedigree chart to share with membership:**

[Pedigreecharts@TxBayAreaGen.org](mailto:Pedigreecharts@TxBayAreaGen.org) (Anita Cooper)

**Share to preserve Society history:**

[Historian@TxBayAreaGen.org](mailto:Historian@TxBayAreaGen.org) (Teresa Rundell)

**Ideas on where or how to advertise BAGS:**

[Publicity@TxBayAreaGen.org](mailto:Publicity@TxBayAreaGen.org) (Terri Myers)

**Not receiving emails?**

[Emailcoord@TxBayAreaGen.org](mailto:Emailcoord@TxBayAreaGen.org) (Vacant, Lisa Smith)

**Don't know the Members Page password?**

[Registrar@TxBayAreaGen.org](mailto:Registrar@TxBayAreaGen.org) (George Porterfield)

---

This newsletter is a monthly publication of the Bay Area Genealogical Society, a non-profit educational organization dedicated to the people of Harris and Galveston counties, Texas, who have an interest in genealogy. Articles on genealogy are welcome. Inclusion is based on space available and is subject to editing. Please include permissions with copyrighted material submissions. Questions or comments on the BAGS Newsletter should be addressed to: Editor, P.O. Box 590853, Houston, TX 77259-0853, or [newsletter@TxBayAreaGen.org](mailto:newsletter@TxBayAreaGen.org). All rights reserved.

## March General Meeting recap...

On Friday, March 25, Bernard Meisner presented a live virtual program to BAGS entitled *Pushes, Pulls, and Records: The Waves of German Immigrants to the United States*. This was a wonderful program detailing the historical events and migration paths for the Germanic people. A question-and-answer session was held following the presentation. A recording of the presentation is available for the next 30 days on the BAGS website, Members Only page along with the handout. Mr. Meisner is a genealogist and lecturer based in the Dallas/Fort Worth Metroplex, a past president of the Mid-Cities Genealogical Society, a co-leader of the Dallas Genealogical Society's German SIG, and is a member of the Texas State and National Genealogical Societies.

**Remember a new password to the MEMBERS ONLY page was put in place in September for the 2021-2022 membership year. If you need the new password, contact our Registrar, George Porterfield, at [Registrar@txbayareagen.org](mailto:Registrar@txbayareagen.org).**



## 2022 BAGS CALENDAR

*With the reopening of businesses, the Bay Area Genealogical Society's Board has voted to offer a mix of virtual and in-person general meetings in the coming year. Details for each, along with registration links, will be posted to the Society website, FACEBOOK page, and future newsletters.*

**Saturday, April 23 at noon** (*In Person Event at University Baptist Church, see page 1 for details*)

**Celebrate International Volunteer Month, Potluck Meal. Members share genealogy tips and tricks**

**Friday, May 27, 7:00 PM** (*LIVE Virtual*)  
***The Peoples of the West Indies & Their History***  
*presented by Diane M. Warmesley*

**June and July programs to be announced**

**August 2022 - Annual Show & Tell with Potluck Meal**

Contact the Board of Directors if you have questions or suggestions about BAGS programs at [info@txbayareagen.org](mailto:info@txbayareagen.org).

## Board Meetings

Currently held as virtual meetings via ZOOM. All members are welcome to



attend. If you would like to attend a Board Meeting, request a link from

[info@TxBayAreaGen.org](mailto:info@TxBayAreaGen.org)

### 2022

April 18  
May 23  
June 20

Board meetings are held on Mondays at 6:30 PM.

[Board Meeting Minutes](#) are available on the Members Page.

## Research Bus Trips

### Tuesday, April 5

If you want to catch the bus, contact County Coordinator, [Kathleen Williams](#) immediately.

Meet at 16511 Diana Lane (Clear Lake City)  
Bus leaves at 9:15am and returns by 4pm  
Bring lunch, flash drive, coins/dollar bills  
Dress in layers

**See details on future dates and to be included [HERE](#).**



# APRIL 2022—BAGS EVENTS

Sunday	Monday	Tuesday	Wednesday	Thursday	Friday	Saturday
					<b>1 in person</b> 10am-2pm 1950 Census Release Party (page 9)	<b>2</b>
<b>3 virtual</b> 2pm-4pm MHM session (see page 6)	<b>4 virtual</b> 10am & 7pm MHM sessions (see page 6)	<b>5 in-person</b> <b>Bus Trip to</b> <b>Clayton Library</b> (see page 3)	<b>6</b>	<b>7</b>	<b>8</b>	<b>9 in-person</b> <b>Index Training for</b> <b>1950 Census +(see</b> <b>page 9)</b>
<b>10</b>	<b>11 virtual</b> 10am & 7pm MHM sessions (see page 6)	<b>12</b>	<b>13 in-person/virtual</b> 10am Index Training for 1950 Census (see page 9) <b>7pm German SIG Zoom</b> <b>session (page 6)</b>	<b>14</b>	<b>15</b>	<b>16</b>
<b>17</b>	<b>18 virtual</b> 10am (no 7pm) MHM sessions (see page 6) <b>7pm Board Meeting</b>	<b>19</b>	<b>20 in-person</b> <b>9:30am Research at</b> Friendswood FHC (page 8)	<b>21</b>	<b>22</b>	<b>23 in-person</b> <b>Noon to 2pm</b> <b>General Meeting</b> <b>with Potluck meal</b> <b>(page 1)</b>
<b>24</b>	<b>25 virtual</b> 10am & 7pm MHM sessions (see page 6)	<b>26</b>	<b>27</b>	<b>28</b>	<b>29</b>	<b>30</b>

# May 2022—BAGS Events

Sunday	Monday	Tuesday	Wednesday	Thursday	Friday	Saturday
<b>1</b> virtual 2pm-4pm MHM session (see page 6)	<b>2</b> virtual 10am & 7pm MHM sessions (see page 6)	<b>3</b>	<b>4</b>	<b>5</b>	<b>6</b>	<b>7</b>
<b>8</b>	<b>9</b> virtual 10am & 7pm MHM sessions (see page 6)	<b>10</b>	<b>11</b> virtual  7pm German SIG Zoom session (page 6)	<b>12</b>	<b>13</b>	<b>14</b>
<b>15</b> virtual  1pm Brick Wall SIG (see page 6)	<b>16</b> virtual 10am & 7pm MHM sessions (see page 6)	<b>17</b>	<b>18</b> in-person 9:30am Research at Friendswood FHC (page 8)	<b>19</b>	<b>20</b>	<b>21</b>
<b>22</b>	<b>23</b> virtual 10am (no 7pm) MHM sessions 7pm Board Meeting	<b>24</b>	<b>25</b>	<b>26</b>	<b>27</b> virtual 6:45pm Socializing 7pm General Meeting (page 1)	<b>28</b> in-person 4pm Meet & Munch at Red River BBQ (page 10)
<b>29</b>	<b>30</b> virtual 10am & 7pm MHM sessions (see page 6)	<b>31</b>				



### Online Research Sessions (via ZOOM teleconferencing) (Members Helping Members)

If you need to brainstorm a research brick wall, gather suggestions, learn how to use an online resource, ask questions, give help, or just visit with other genealogists, join in with either or both of the sessions, with or without video. Participants can share their screens and demonstrate recent research discoveries.

The latest access details are posted on the BAGS [Members Helping Members Page](#).

**Weekly: Mondays from 10:00 AM to noon join moderator Renee Ball.**

**Weekly: Mondays from 7:00 PM to 8:00 PM join moderator Kim Zrubek.**

**Monthly: 1st Sunday from 2:00 PM to 4:00 PM**

If you want to practice using Zoom or have questions connecting to a session, contact Kim Zrubek by email [education@txbayareagen.org](mailto:education@txbayareagen.org) or by phone 281-992-2636.

---

*Do you have brick walls that need to come down?*

Join the **Brick Wall Busters Special Interest Group (SIG)**  
and let us help you by providing new research paths to break down that wall!



Each brick wall will be briefly presented by an attendee and then the meeting will be opened to suggestions from the group. When sharing, members will be asked to share their screen to allow other members to view their research and the problem. Hopefully, the group will be able to offer additional avenues to search. Remember, the more you can tell us about what you know (and don't know) plus where you have already researched, the more we can help you! Attendees do NOT have to submit a brick wall to participate in the meeting. All are welcome to contribute to the discussion.

Items to consider including when sharing your brick wall challenge: research question, timeline, family tree, list of resources already consulted, and/or a paragraph summary.

**Sunday, May 15, 2022 at 1:00 pm**  
**[REGISTER HERE](#)**

---

### German Special Interest Group

The BAGS German SIG started their second year in October. Meetings are on the second Wednesday evening of each month, 7:00—8:30 pm via ZOOM.



**April 13 - May 11 - June 8**

Anticipated topics for the coming year include identifying your German ancestor's hometown, learning more about your ancestor's hometown, German Script, German naming conventions and variations, Familienbuchs, church records, civil records, and more.

If you are interested in joining this group, please complete the [German SIG Interest Survey](#) on our website.



*A BIG THANK YOU to Rebecca “Becky” Jones for serving as the Society’s 2nd Vice President (program planning) and Newsletter Editor. She has done a wonderful job!*

*A BIG THANK YOU to Denise Hewitt for serving as the BAGS Telephone Committee Chair soon after joining as a new member. We appreciate your efforts to keep our membership informed!*

## OPEN POSITIONS – WE NEED YOUR HELP!

### OFFICER NEEDED:

- **2nd Vice President** in charge of monthly programming

### CHAIRPERSONS NEEDED:

- **Newsletter Editor** creates monthly newsletter
- **E-mail Coordinator** sends emails to membership several times per month
- **Telephone Committee** needs a chairperson and two (2) volunteers for the call tree

## BAY AREA GENEALOGICAL SOCIETY JOURNAL

The Fall/Winter 2021 edition has been published and is available on the [Members Only](#) page of our website. Check out articles showcasing our society’s twenty years in growth.

**WE NEED MEMBERS TO CONTRIBUTE ARTICLES!** Do you have a story to tell of your ancestors? Think about sharing your methodology in cracking that familial question that has long been on your mind. The society strives to have our members share their findings, tips, and methods applied to reach back to the next generation or find that lost uncle. Consider sharing by submitting one of your written records.



Todd Roberts, Journal Editor, has composed a [“Journal Article Submissions Q & A”](#) answering some of the more common questions about submitting an article for print. Email submissions to Todd at [journal@txbayareagen.org](mailto:journal@txbayareagen.org) or to inquire about additional information.

## BAG\$ Report by Susie Ganch, Treasurer

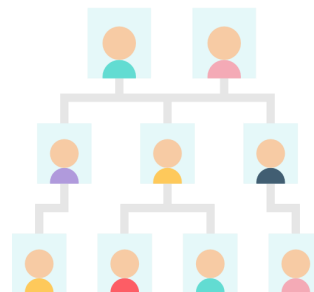
### ASSETS

WELLBY CHECKING ACCOUNT	\$ 3,276.64
WELLBY SAVINGS ACCOUNT	\$ 5,710.87
WELLBY SHARE CERTIFICATE (CD)	\$ 6,080.85
<b>TOTAL MONETARY ASSETS on 28 February 2022</b>	<b>\$15,068.36</b>

## Member Pedigree Chart submissions...

All members are encouraged to submit a pedigree chart of their family. The chart does not need to be complete and vital information about living relatives may be omitted. The chart will be available for members to review on the [Members Only](#) page — **“Pedigree Charts of Our Members.”**

Sharing your information could create a connection with other researchers that can help! Submit a chart or ask questions and get assistance from Anita Cooper via email to [pedigree@TxBayAreaGen.org](mailto:pedigree@TxBayAreaGen.org).



### In-Person BAGS Members-Only Research Sessions at the Friendswood Family History Center

Dates: April 20 & May 18 from 9:30am to 11:30am

The library is located at 505 Deseret Dr, Friendswood ([online map](#)).  
Enter the building on the side furthest from the street.

The center is open to the public for research:  
10:00am - 12:00pm, Tuesday, Thursday, and Friday  
7:00pm - 9:00pm, Tuesday evenings



### Clayton Library Center for Genealogical Research

**HOURS** — 10am to 5pm on Tues, Wed, Fri, and Sat  
Noon to 7pm on Thurs

**NEW**

*The library is now open fully for browsing and conducting research at tables during business hours. You are encouraged to wear a mask, but it is not required. Limited service is offered by either email requests to [cla.reference@houstontx.gov](mailto:cla.reference@houstontx.gov) or phone (832) 393-2600.*



#### April Genealogy Face2Face Events (Zoom Video Conference)

- Thu, Apr 07, 1:00 PM - 2:00 PM [1950 Census – How Can I find my Family?](#)  
with Susan Kaufman
- Thu, Apr 21, 1:00 PM - 2:00 PM [You Can Do More Than Google Your Ancestors!](#)  
with Mitch Clendenning

---

#### Clayton Library Presents—(Microsoft Teams Video Conference)

- Fri, Apr 01, 2:00 PM - 3:00 PM [8 Steps to Preserving and Organizing Your Family Photographs](#)
- Fri, Apr 08, 2:00 PM - 3:00 PM [Pedigree Triangulation: A Key Methodology for Genetic Genealogy](#) – guest speaker Diana Elder, co-host of *Research Like a Pro Genealogy Podcast*
- Fri, Apr 22, 2:00 PM - 3:00 PM [Extracting Information from Old German Documents](#) - guest speaker Dr. Fritz Juengling of the Family History Library

*Visit the library's website— <https://claytonlibraryfriends.org/events> for more details  
On each program. Pre-registration is required to attend. A link to REGISTER your choice of  
events is included in each description*





## 1950 U.S. Census Index Training

**Saturday, April 9 at 2 PM and Wednesday, April 13 at 10 AM  
(come either date) at the Friendswood Public Library.**

Currently, every field on the 1950 U.S. Census is being indexed by proprietary handwriting recognition technology. The FamilySearch.org "Get Involved" program will enlist the help of volunteers to review the initial index against the images to confirm or correct values using a new reviewer/improvement system (computer web browser and mobile friendly). You will have the option to locate, review, and correct your family and community. If you would like to participate and want to get together for some training, come to either of these sessions. Bring your laptop or mobile device.

In the meantime, the National Archives [1950 Census website](https://www.archives.gov/research/census/1950) allows you to access individual pages or browse the enumeration district (ED) set by state, county, **first/last name**, and/or ED number. If you have difficulty finding your person, use Steve Morse Unified 1950 Census ED [Finder](#) and [Viewer](#). Locating the ED can narrow the set of pages to browse. Ancestry.com also offers a cool 1950 Census [district finder](#) (beta) that provides integrated map and layer experience similar to Google Maps. For more information on 1950 Census:

**National Archives:** <https://www.archives.gov/research/census/1950>

**Ancestry.com:** <https://www.ancestry.com/c/1950-census>

**FamilySearch.org:** <https://www.familysearch.org/1950census>

Thomas MacEntee, Genealogy Bargains, presented the program *The 1950 US Census: Are You Ready?* to BAGS in February. His handout is full of background information and links to sites to assist you in locating family in the 1950 Census. You can access the handout on the [BAGS website Members Only page](#).

Unified 1950 Census ED Finder

(Obtaining the Census Enumeration District for an 1880 to 1950 Location in One Step)

Stephen P. Morse, PhD & Joel D. Weintraub, PhD

[Universal 1950 ED Viewer](#)
[Census Codes](#)
[Search by Name](#)
[Frequently Asked Questions](#)
[My Other Webpages](#)

Enter as much of the 1950 location as you know

If you select your city from the list of cities displayed, you will be able to enter street-level information

If you select "other" from the city list, you will be able to type in your city or town name

State Texas County Travis City or Town Austin

House Number 2105 Street Scenic Dr

[See ED Maps for Travis County](#)

You can reduce the number of EDs by selecting cross streets and back streets that complete the city block [see google map](#)

Cross or back street on same city block

1950 ED numbers corresponding to your location

256-26

Clicking on a 1950 ED number above will display the:

☒ Census Pages
 ☐ ED Description (transcribed)
 ☐ ED Description (microfilm)
 ☐ Streets in the ED

Get 1950 ED Number(s) [why?](#) [Reset](#)

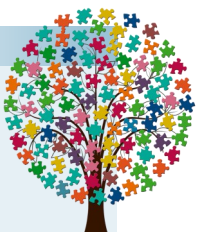
Bay Area Genealogical Society

March-April 2022

Vol. 22, Iss. 5

9

## GENEALOGY WORD SEARCH



### 1950s

Bobby (socks)  
Soda (fountain)  
Rotary (phone)  
Poodle (skirt)

Groovy  
Aprons (calico)  
Jukebox  
Bouffant (hair)

Transistor (radio)  
Drivein  
Boogaloo  
Limbo  
Records

L	P	Y	I	Y	R	R	J	T	T	L	T	K	B	A
E	A	W	O	F	R	H	J	C	S	R	N	O	F	S
M	F	M	S	T	D	A	W	U	A	S	B	M	P	Y
N	I	E	V	I	R	D	T	N	K	B	L	Z	B	Q
B	E	A	P	R	O	N	S	O	Y	E	B	F	V	G
S	L	A	O	G	S	I	Z	F	R	Y	B	M	D	I
L	D	J	Q	O	S	I	C	G	V	N	O	O	R	T
R	O	L	Y	T	L	U	B	O	Q	S	U	M	X	L
C	O	D	O	U	U	A	O	S	D	V	F	O	R	O
J	P	R	E	R	Y	R	G	R	U	C	F	B	P	H
A	D	O	S	J	G	C	O	O	T	V	A	M	D	R
F	W	W	D	K	O	C	T	B	O	W	N	I	X	P
P	S	Z	Z	D	E	X	S	S	B	B	T	L	V	V
Y	C	L	W	R	S	J	F	T	G	M	R	F	I	I
O	K	V	Q	S	L	H	U	H	S	H	Y	Z	I	D

Puzzle created using Discovery Education's puzzle maker - <http://puzzlemaker.discoveryeducation.com>



### **BAGS Meet and Munch**

Our first meeting was a success. Almost 30 members with families, met, socialized and shared a meal on Saturday, March 26. We plan to do this again in May. **Please consider joining us on Saturday, May 28 at 4pm at the Red River BBQ in League City.** Members and their family and guests are invited.

### **Conference Keeper**

<http://conferencekeeper.org/calendar>

"The most complete Calendar and Collection of Genealogy Events on the Internet" Find lectures, classes, cruises, conferences, institutes all in one place. Find items to fill your calendar.

Just want to look at future events that are held virtually? They have a calendar for that. <https://conferencekeeper.org/virtual>

### **BAGS Facebook**

Facebook Group (for members only)

<http://www.facebook.com/groups/txbayareagensoc>

Facebook Page (open to the public)

<https://www.facebook.com/txbayareagen>

