

BAY AREA GENEALOGICAL SOCIETY NEWSLETTER



May Member Meeting (Virtual)



FRIDAY, May 28, 2021, at 7:00 P.M.

Genealogy from a Private Investigator's Perspective
presented by Lisa Smith, Dragon Investigation Group

Advance registration required. Pre-register now by clicking [HERE](#).
An email will be sent with instructions on how to join the meeting.

See how the methodology, techniques, and resources used in the private investigation and genealogy professions overlap and are applied to solve cases. Four case studies are presented.

Lisa Smith is a licensed private investigator, certified fraud examiner, and professional genealogist. She is the owner of Dragon Investigation Group, an investigation firm located in Conroe, and is currently serving as BAGS' President. She specializes in DNA matching and adoptee/birth location. Lisa can be reached via e-mail at lisa@dragoninvestigation.com or via her website www.dragoninvestigation.com.

Inside this issue

BAGS Contacts	2
BAGS Calendar	3
Future Presentations	4
BAGS Board Election.....	5
BAGS Leadership.....	6
MHM Updates.....	7
Research & Learning Opportunities.....	9
LEGACY Webinars.....	11

Special points of interest

- **NEW Friendswood FHC BAGS Private Dates**
- **Biennial Board Elections**
- **Family Reunion Ideas**
- **Genealogy Word Search**
- **WWI Memorial Opens**

**BAGS OFFICERS
2019-2021**

**President
Lisa Smith**

President@TxBayAreaGen.org

First Vice President

Susie Ganch

VicePresident@TxBayAreaGen.org

Second Vice President

Rebecca 'Becky' Jones

VicePresident2@TxBayAreaGen.org

Treasurer

Bill Mayo

Treasurer@TxBayAreaGen.org

Registrar

George Porterfield

Registrar@TxBayAreaGen.org

Recording Secretary

Kitty Olson

RecordingSec@TxBayAreaGen.org

Corresponding Secretary

Teresa Rundell

CorrespondSec@TxBayAreaGen.org

NEWSLETTER STAFF

Editor

Rebecca "Becky" Jones

newsletter@TxBayAreaGen.org

Proofreader

Chester Karrick

Kim Zrubek

Photographer

Bill Mayo

Distributor

Kathleen Williams

emailcoord@TxBayAreaGen.org

Web Editors

Polly Swerdlin and

George Porterfield

webeditor@TxBayAreaGen.org

WELCOME NEW MEMBERS

Regina Williamson of Houston

Nancy Davis of Highlands

Bill Simmons of Houston



Additional points of contact:

Contact entire BAGS Board:

bagsboard@TxBayAreaGen.org

Need help attending the next meeting?

memberservices@TxBayAreaGen.org (**OPEN**)

Research questions or to provide research assistance:

education@TxBayAreaGen.org (Kim Zrubek)

Submit information for the Journal, published twice

a year: journal@TxBayAreaGen.org (Todd Roberts)

Submit pedigree chart to share with membership:

pedigreecharts@TxBayAreaGen.org (Anita Cooper)

Share to preserve Society history:

historian@TxBayAreaGen.org (Teresa Rundell)

Ideas on where or how to advertise BAGS:

publicity@TxBayAreaGen.org (Terri Myers)

Not receiving emails?

emailcoord@TxBayAreaGen.org

Don't know the Members Page password?

Registrar@TxBayAreaGen.org

This newsletter is a monthly publication of the Bay Area Genealogical Society, a non-profit educational organization dedicated to the people of Harris and Galveston counties, Texas, who have an interest in genealogy. Articles on genealogy are welcome. Inclusion is based on space available and is subject to editing. Please include permissions with copyrighted material submissions. Questions or comments on the BAGS Newsletter should be addressed to: Editor, P.O. Box 590853, Houston, TX 77259-0853, or newsletter@TxBayAreaGen.org. All rights reserved.

APRIL General Meeting recap...

The Road to Independence: Researching Your Revolutionary War Ancestors

presented by **Michael L. Strauss, AG**



Michael's presentation to the membership last month began with a history lesson on early American ancestors' struggles for independence. His talk was filled with interesting stories. An enormous amount of source information beneficial to family historians wanting to trace ties to patriots of the Revolutionary War was shared in his five-page handout, including links to record collections and over a dozen reference sources.

If you missed the April presentation or just want to watch his outstanding presentation again, the video recording will be available through July 30th on the [BAGS Members Only](#) website under "[Meeting Handouts and Videos](#)".



2021 BAGS CALENDAR

*Due to COVID-19 concerns, all **in-person** activities of the Bay Area Genealogical Society have been cancelled. **Monthly general meetings will be held as virtual webinars.** Details for registration will be posted to the Society website and future newsletters.*

Friday, May 28, 7:00 PM - ***Genealogy from a Private Investigator's Perspective*** presented by Lisa Smith, President, Bay Area Genealogical Society, and owner of [Dragon Investigation Group](#)

Friday, June 25, 7:00 PM— ***Reconstructing Communities Using Census Records, Sanborn Maps, and City Directories*** presented by Ari Wilkins

Friday, July 30, 7:00 PM— *Topic to be announced soon*

Friday, August 27, 7:00 PM— BAGS Annual Show & Tell

Board Meetings

Currently held as virtual meetings via ZOOM. All members are welcome to attend. If you would like to attend a Board Meeting, request a



link from info@TxBayAreaGen.org

2021

May 24
June 28
July 26
August 23

Board meetings are held on Mondays at 6:30 PM.

Research Bus Trips



Harris County Precinct #2 scheduled a meeting on May 27 to discuss safety protocols to resume bus trips. A BAGS representative plans to be in attendance. Results of the meeting will be forthcoming.

UPCOMING PRESENTATIONS

June 25th, 7:00pm - BAGS June General Meeting



Reconstructing Communities Using Census Records, Sanborn Maps, and City Directories

Recreating communities can provide rich and insightful details about an ancestor's life and surroundings. This lecture will demonstrate ways to combine data from census records, Sanborn maps and city directories.

Ari Wilkins, a graduate of Louisiana State University, has been actively researching family history since 1998. Ms. Wilkins has spoken nationally at the National Genealogical Society, Federation of Genealogical Societies, Texas State Genealogical Society, Ohio Genealogical Society, Institute of Genealogical and Historical Research, Salt Lake Institute of Genealogy, American Library Association, RootsTech, and a multitude of local societies.

Presented by Clayton Library Friends...



June Genealogy Face2Face Events

- Thu., June 3, 1:00pm – 2:00pm - **Focus on BAGS: An Overview of BAGS Programs**
presented by Lisa Smith, President, Bay Area Genealogical Society
- Thu., June 17, 1:00pm – 2:00pm - **J-Stor**
presented by Gay Carter, Retired Government Documents Librarian at UHCL

Visit the library website— <https://claytonlibraryfriends.org/events>—for more details on each program. Pre-registration is required to attend. A link to REGISTER your choice of events is included in each description.

Have you experienced a presentation that really spoke to your genealogical research needs? Would you want to hear more from a specific presenter? Is there a particular research skill or topic you would welcome? These are some of the questions considered by those

preparing the schedule for the next calendar year of presenters to the membership of Bay Area Genealogical Society. ***Feedback from our members is greatly appreciated.*** Tell us what you enjoyed...what you learned...what you want to be on the calendar in the coming months...

Email your comments to Rebecca Jones, Vice President, Programming at:

vicepresident2@BayAreaGen.org



Per the Bay Area Genealogical Society Bylaws, the current Board of Directors has selected members for the nominating committee who will build a slate of officers to present to the membership. We currently have 139 members in our society, and I am sure that many of you have skill sets that would be an asset to our society. We are an all-volunteer group. We need the participation of our members willing to fill one of our positions so we can keep our society active and thriving. We **NEED** your help. In addition to the duties of each individual officer, all board members are required to attend a majority of the monthly board meetings on Zoom.

The nominating committee consists of Lisa Smith, Susie Ganch, Kim Zrubek, Deborah Gammon, Nick Cimino, and Jane Martin.

If you want to have some input to the future of our society, please consider volunteering. Below are brief descriptions of the Officers to be elected. The full descriptions are found on the Member's Page under [Board of Directors Job Descriptions](#). If you are willing to serve on the board as an officer, please contact one of the nominating committee members. ***"No one can do everything, but everyone can do something."*** Please consider applying for one of the positions listed below.



President

Preside at the board and general meetings.

Be the official representative of BAGS in matters concerning external affairs and relations with other organizations.

Be responsible for the guidance and leadership of the Society.

Appoint committee chairpersons, subject to approval by the Board.

1st VP:

Assume duties of the President in the absence, incapacitation, or resignation of the President.

Chair the Bylaws Committee.

Oversee special projects and committees.

Ensure that each officer, committee chair, and appointed official keeps current descriptions of their responsibilities and activities.

2nd VP:

Responsible for programs for meetings and seminars agreed upon by the Board and Society.

Liaison between BAGS and Speakers.

Notifying the church/facility representative and board members of the necessary room set up for seminars.

Determining the necessary a/v equipment required for each program and notifying the President and other appropriate board members for approval of the expenditures and arrangements.

Have handouts available for members.

Recording Secretary

Responsible for recording the minutes of board meetings and general meetings and distribute to board members for approval.

Retrieving the mail at the U.S. post office box.

Corresponding Secretary

Send a "thank you for visiting" e-mail or card to each visitor at our meetings.

Send a get-well card to any member when informed of illness or sympathy card when appropriate.

Treasurer:

QuickBooks Online Plus is used for keeping our financial records.

Manage the society's financial resources.

Maintain checking account and CD's.

Create and manage the society's annual budget.

Make deposits and disbursements from checking account.

Registrar

Update and maintain the Master Membership Roster spreadsheet on the Membership Roster tab with any renewals and new members (in person or online).

Give a brief membership report, generally the current membership total, at Board and General Meetings.

Make name tags for any new members and for the speaker before the next general meeting.

Introduction to your Recording Secretary...



Kitty Olson is a native Texan who graduated with an undergraduate degree in Computer Information Systems and a graduate degree in Behavioral Science from the University of Houston-Clear Lake. She retired from IBM in 2011 as a senior project manager. Settling into retirement she decided to validate the family lore that her maternal 2nd great-grandmother was a Cherokee Indian who, after the death of her husband, gave up her two young boys before returning to her Indian family. Like many family stories there is often a kernel of truth to be found embedded in the story but over the years it becomes embellished by each subsequent generation. Kitty first submitted her DNA to Ancestry, which identified her ethnicity as 72% England and

Northwestern Europe, 15% Ireland, 10% Scotland, 2% Norway and 1% Germanic Europe. She then joined BAGS in 2018 to learn more about how to research the “paper trail” to verify the lineage of both her maternal great-grandfather and his mother, the alleged Cherokee Indian.

Kitty was able to verify that her 2nd great-grandmother, who was living in Mississippi following the death of her husband, did indeed relinquish her two young boys, one who was Kitty’s maternal great-grandfather, to two of her husband’s brothers living in Texas. That kernel of the family lore was proven through family interviews, census records, and death records. However, the paper trail did not support the family story that her 2nd great-grandmother was a Cherokee Indian. Documentation was located that revealed she had remarried and raised another family in Mississippi. While researching this maternal family line Kitty discovered that she was eligible for both the Daughters of American Revolution (DAR) and the Daughters of the Republic of Texas (DRT). She is now a member of the Sam Houston Chapter of the DAR and the James W. Brown Chapter of the DRT.

Recently with the assistance of the BAGS Members Helping Members (MHM) group moderated by Kim Zrubek, Kitty was able to solve a brick wall which will allow her to submit a supplemental application to the Daughters of the Republic of Texas on her paternal line, thereby documenting early Texas heritage on both her maternal and paternal lines. Prior to the pandemic Kitty enjoyed the BAGS sponsored trips to the Clayton Library for Genealogical Research and is looking forward to once again being able to continue her Texas research at the Clayton Library when the BAGS’ sponsored trips resume.

...and Education Chairperson

Kim Zrubek was born and raised in Houston area. She has visited almost all 50 states and a dozen foreign countries. In an earlier life, she developed computer software and provided computer system administration at several companies. Kim began shelving books at the local library as a volunteer. She earned her MLS and now serves as a reference librarian. Kim found a new hobby when she assumed the job of teaching genealogy classes. In 2006, Kim joined BAGS and began working on the Society’s newsletter. Her dad has researched their family lines and recorded the vitals and narratives in a self-published book. She continues to search for original records to enhance his work. Their family roots come from Scotland, Ireland, Germany — traveling through Maryland, Virginia, Kentucky, Missouri, and Texas. Through his efforts, she has joined the DAR and DRT. Kim and her husband enjoy reading science fiction and fantasy books. They have attended and worked a number of World Science Fiction and World Fantasy Conventions. He hosted art shows while Kim fed 100+ staff members for four days out of a hotel suite. Comparatively, BAGS Hospitality is a piece of cake.





Online Research Sessions (via ZOOM teleconferencing) (Members Helping Members)

If you would like to brainstorm a research brick wall, gather suggestions, learn how to use an online resource, ask questions, give help, or just visit with other genealogists, join in with either or both of the sessions, with or without video. Participants can share their screens and demonstrate recent research discoveries or accomplishments.

The latest access details are posted on the BAGS [Members Helping Members Page](#).

Weekly: Mondays from 10:00 AM to noon join moderator Renee Ball.

Weekly: Mondays from 7:00 PM to 8:00 PM join moderator Kim Zrubek.

Monthly: 1st Sunday (each month except July) from 2:00 PM to 4:00 PM
June 6—August 1—September 5—October 3—November 7

If you want to practice using Zoom or have questions connecting to a session, contact Kim Zrubek by email education@txbayareagen.org or by phone 281-992-2636.

Were you a participant in BAGS first **Brick Wall Busters Special Interest Group (SIG)** on Sunday, May 16th? If you were, we hope you came away with new ideas and perspectives on researching that elusive ancestor. If you missed the May session, don't fret. Plans are to schedule another Brick Wall Busters session in **July** to share success stories from the earlier submissions and explore new brick walls.



Keep your eye out for forthcoming details!

German SIG (Special Interest Group) meets the 2nd Wednesday of each month at 2:00 pm. For now meetings are held via Zoom.



Mark your Calendar
June 9 - July 14 - August 11 - September 8

[REGISTER IN ADVANCE — CLICK HERE](#)

After registering, you will receive a confirmation email containing information about joining the meeting. For more information contact [George Porterfield](#) or [Karen Engelauf](#), or complete [our survey form](#) to join the SIG.

OPEN BOARD OF DIRECTORS POSITIONS...



There are many ways to contribute to our Society such as submitting articles to our newsletter or journal, participating in Members-Helping-Members sessions, or sharing knowledge in special interest groups. Another way is by filling a role on the Board. We have several vacant committee chair positions. Consider offering your skills to one of following:

Are you a Human Resources person? Interested in onboarding new members of our Society?

If so, consider becoming our [Member Services](#) chairperson. (approximately 15 minutes per new member, 1.5-hour Board meeting once a month).

Would you like to greet our members and visitors as they come to our meetings? If so, consider becoming chair of the [Welcoming committee](#). Note: This position is currently inactive as we meet virtually and will reactivate once in-person meetings resume. (approximately 1 hour once a month prior to start of General meeting, 1.5-hour Board meeting once a month).

Job descriptions for the above roles are located on our website's Members page. Please send an email with your interest, skill set, and availability to info@txbayareagen.org.



The 2021 Spring/Summer edition of the **Bay Area Genealogical Society Journal** will be available soon to the membership in digital format. Printed version will be available later this summer. Thank you to those who shared articles for this edition.

Submissions for the Fall/Winter 2021 edition are being accepted now. Todd Roberts, Journal Editor, has composed a ["Journal Article Submissions Q & A"](#) answering some of the more common questions about submitting an article for print. Email submissions to Todd at journal@txbayareagen.org or to inquire about additional information.

BAG\$ Report by Bill Mayo, Treasurer

CHECKING ACCOUNT

Balance as of 28 February 2021	\$ 2,956.17
Deposits+	\$ 85.06
Expenditures*	\$ -343.75
Balance on 31 March 2021	\$ 2,697.48

JSC FCU SAVINGS ACCOUNT \$ 5,704.26

JSC FCU SHARE CERTIFICATE (CD) \$ 6,046.83

TOTAL MONETARY ASSETS on 31 March 2021 **\$14,448.57**

+ Consists of membership dues, donations, mailing fees and interest.

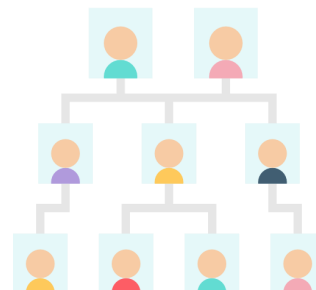
* Speaker fee, PayPal fee, National Genealogical Society Conference fee, financial software subscription & Christmas Bags of Cheer pencils.

Member Pedigree Chart submissions...

All members are encouraged to submit a pedigree chart of their family. The chart does not need to be complete and vital information about living relatives may be omitted. The chart will be available for members to review on the [Members Only](#) page — **"Pedigree Charts of Our Members."**

Sharing your information could create a connection with other researchers that can help! Submit a chart or ask questions and get assistance from Anita Cooper via email to

pedigree@TxBayAreaGen.org





Friendswood Family History Center is OPEN to THE PUBLIC!

Open weekly on Tuesday, Thursday and Friday from 10am to 2pm.

Please wear a mask. Volunteers available to assist.

505 Deseret Dr., Friendswood (enter building on side furthest from the street)

FREE Access to premium subscription websites:

- 19th Century **British Library Newspapers**
- **Alexander Street Press** - American Civil War
- **American Ancestors** - Colonial & Early American
- **FamNet** - New Zealand family history network
- **Newspapers.com**
- **Paper Trail** - 19th Century westward American migration
- **Ancestry.com** - Institution Version
- **ArkivDigital** - Swedish Church
- **FindMyPast** - United Kingdom
- **MyHeritage** Library Edition
- **Puzzilla**
- **Fold3**
- **Geneanet** - UK

NEW

NEW DATES SCHEDULED for In-Person Research Sessions at the Friendswood Family History Center (FHC) for BAGS members only!

The library is located at 505 Deseret Dr, Friendswood ([online map](#)). Enter the building on the side furthest from the street. **The center will be opened only to BAGS members on these dates.** Take advantage of the electronic databases and books that are only accessible from within the FHC. Six computers are available for research. Bring a USB drive to save the information that you find. **If you do plan to attend, please send an RSVP email to Kim Zrubek at education@txbayareagen.org or text/call 832-660-5898.**

9:30 AM—11:30 AM

June 16 - July 21 - August 18

Please wear a mask while in the building.



Clayton Library Center for Genealogical Research

Our doors are OPEN — Tuesdays – Saturdays | 10 AM – 4 PM

Walk-ins are welcome on a first come, first serve basis. Appointments are strongly encouraged by calling the library at **(832) 393-2600**.

PLEASE NOTE: Important safety protocols will be implemented to ensure the safety of customers and staff. Research rooms are limited to 50% capacity. Masks are to be worn at all times. Staff are available to offer “lite” reference service. The second floor will be closed but access to microfilm will be made available with staff assistance.

Limited service is still offered by either email requests to cla.reference@houstontx.gov or phone **(832) 393-2600**.



From Kim Zrubek...

Family Reunions: Gifts and Games

Perhaps you will be fortunate to attend a family reunion this summer. Help the group visualize and learn more about their family with personalized posters, gifts or games. Display a poster of the family tree. Play family trivia with personalized cards. Put together a family jigsaw puzzle. You can get step-by-step assistance during one of the MHM sessions or email Kim at education@TxBayAreaGen.org. If you have already created a family puzzle, game, or gift, please send us a photo to share the inspiration.



*Photo courtesy of member, Rebecca Jones,
WILSON Family Reunion 2012, Tulsa, OK*

Visualizing The Family

You can easily and inexpensively print a large fan chart or pedigree chart of your family information as a poster. A color poster printer is available at the Friendswood Public Library for the public that prints a maximum size of 42 inches wide and 5 feet long. The cost is 1 cent per square inch (e.g. a poster sized 3 foot by 2 foot will cost is \$8.64). Email your family tree image (JPG, PNG, TIF) or PDF file to the library's reference desk reflib@friendswood.com and specify the desired size dimensions. Use the print or publish feature in your genealogy software or online service to generate the printable file.

Games

Create customized family deck of playing, trivia, or trading cards. A number of sites such as Shutterfly.com, Zazzle.com, and Snapfish.com allow you to order one or more decks of playing cards customized with a family photo on the back of every card. To make trivia or trading cards, use the game cards at MakePlayingCards.com to customize both front and back of each card. The family information could include a photo, their name, vitals, spouse, occupation, religion, and an interesting life note.

Puzzles

Create custom jigsaw puzzles from a group family photo. Family members have the chance to learn about the individuals in the photo while putting the puzzle together. Don't have a group family photo? Create a photo collage and use that image for the puzzle. There are many companies that offer to print a customized puzzle. To find them use Google with the search terms **create jigsaw puzzles**. You decide the size, number of pieces, material and finish.

Gifts

Several ideas include custom calendars to share photos and anniversary dates of family events, custom photo ornaments, a family photo slideshow, and a newspaper scrapbook. There are a number of companies that allow you to create customized calendars and scrapbooks by uploading pictures and then drag and drop into place.

Take a look at the selection of FREE webinars offered on a variety of topics in 2021. One of these may be what you need to jump start research on that ancestor that still seems to be in a holding pattern on your TO DO List.



All on the list are offered FREE on the date and time of the presentation but require a membership fee for viewing the recording outside of a week after presentation.

[Click HERE](#) to review the full list of **June** webinars offered with descriptions. Remember to register for those of interest.

Tuesday, June 1, 9:00 PM CDT

Topic: Revitalising Pacific Connections with Big Y

Speaker: Elena Fowler

Wednesday, June 2, 1:00 PM CDT

Topic: Solving Family Mysteries with mtDNA

Speaker: Mags Gaulden

Friday, June 4, 1:00 PM CDT

Topic: African Americans in the U.S. Revolutionary War

Speaker: Janice Lovelace, PhD



Tuesday, June 8, 1:00 PM CDT

Topic: New Breakthroughs in MyHeritage's Photo Tools

Speaker: Tal Erlichman

Wednesday, June 9, 7:00 PM CDT

Topic: Samoan Genealogy (Gafa) Retold

Speaker: Andrew Reuben Peteru

Tuesday, June 15, 7:00 PM CDT

Topic: They Had Names: Identifying Children Represented by Tick Marks in Pre-1850 Censuses

Speaker: Denise E. Cross, LSLIS, CG

Wednesday, June 16, 1:00 PM CDT

Topic: New England's 'Seventh State': Life Along the Coast

Speaker: B. J. Jamieson

Friday, June 18, 1:00 PM CDT

Topic: Online Sources for Scottish Genealogy Research

Speaker: Christine Woodcock



Tuesday, June 22, 1:00 PM CDT

Topic: Top Tips for Reviewing Smart Matches and Record Matches

Speaker: Daniel Horowitz

Wednesday, June 23, 1:00 PM CDT

Topic: Angel Island's Immigrants from 80 Countries: Stories from the West Coast Counterpart to Ellis Island

Speaker: Grant Din

Wednesday, June 30, 1:00 PM CDT

Topic: Genealogy for Houses

Speaker: Jeanie F. Glaser



GENEALOGY WORD SEARCH

SUMMERTIME

FUN

BEACH

BOATING

FAMILY VISITS

FISHING

GARDENING

GRANDCHILDREN

HIKING

MOVIES

OUTDOOR CONCERTS

READING

REUNIONS

ROAD TRIPS

SIGHTSEEING

SWIMMING

VACATION

O	G	K	H	A	V	G	U	G	X	G	I	X	F	S
T	H	C	P	R	N	Z	G	S	G	R	F	F	U	T
J	R	G	A	I	H	C	G	N	N	A	N	U	R	R
S	J	E	H	S	W	I	M	M	I	N	G	V	O	E
C	H	S	U	L	P	V	S	K	E	D	F	U	A	C
H	I	K	I	N	G	E	F	V	E	C	A	T	D	N
F	H	G	Q	A	I	U	X	I	S	H	Z	E	T	O
Z	C	Z	N	V	Q	O	L	U	T	I	Q	B	R	C
O	A	C	O	I	X	G	N	H	H	L	X	O	I	R
N	E	M	T	Z	T	H	T	S	G	D	V	D	P	O
V	B	K	W	S	W	A	L	K	I	R	Z	K	S	O
A	C	Q	D	F	K	A	O	P	S	E	P	E	L	D
N	O	I	T	A	C	A	V	B	O	N	V	M	F	T
S	T	I	S	I	V	Y	L	I	M	A	F	P	I	U
G	N	I	N	E	D	R	A	G	U	R	Z	Z	T	O

Puzzle created using Discovery Education's puzzle maker - <http://puzzlemaker.discoveryeducation.com>



In mid-April the new National World War I Memorial in Washington, D. C. was opened to the public providing an opportunity to recognize the 4.7 million who served in the Great War. A virtual tour of the new park is available from the comfort of your home by clicking [HERE](#) along with a video of the dedication ceremonies.

A 100 page complimentary PDF file copy of the WWI Genealogy Research Guide is available upon request [HERE](#).

