



Bay Area Genealogical Society

Newsletter

P.O. Box 891447
Houston, TX 77289-1447

Volume 9, Issue No. 8

April 2010

Friday, April 30, 2010 at 7:00pm:

Annual BAGS Demolition Day: Breaking down your research “brick walls”

Public Invited. Join us at 6:30pm for coffee and socializing.

**We meet at the University Baptist Church in the Great Room, 2nd floor.
(16106 Middlebrook Drive, Clear Lake City - [online map](#))**



Breaking down brick walls.....What do I do? Where do I look? How do I find it?

Have you reached a brick wall, a genealogical dead-end in your research? There are brick walls of all sizes. You may have exhausted every avenue of research available to you. Or have you? Is there a place you forgot to look, a thread you didn't follow? It can be very frustrating when you get to this point.



That's what demolition day is about. Come ask your questions and discuss options with other members of BAGS. You may have an answer or suggestion for someone and vice versa.

To participate in Demolition Day and get help with your brick walls, all you have to do is show up at the April 30 meeting with questions. Consider submitting your questions before the meeting by e-mail to Susie Ganch (sganch@verizon.net) to allow someone time to research answers before the meeting.

PLEASE REMEMBER this is a two-hour (maximum) meeting and the purpose is to GUIDE YOU to successful research. State your inquiries with basic information of dates, location and person's name (no need to include relationships). For example, here is one of Susie's brick walls: Her ancestor, Cornelius Thomas Watson married Mary Ann Coleman Jan 24, 1850. They had 9 children, one of whom was her great grandfather. Cornelius was born Sept 22, 1827 according to the family Bible. The family is listed in the 1860 Leon County census. They are nowhere to be found in the 1850 census. Susie wants to know where they came from. Help!!

WHAT'S INSIDE

- 2 President's Message, New Members
 - 3 Emily Croom Seminar Map, Genealogy gadgets & fitness quiz
 - 4 Missouri & Puerto Rico Research Aids, Liendo Plantation Trip, The Cradle Tour
 - 5 Calendar for BAGS
 - 6 Committee News
 - 7 Local Area Events, Conferences, & Classes
- (insert) Emily Croom Seminar Registration Form & Map

Emily Croom Seminar

**Saturday, May 1 from 9:00am – 3:00pm
at College of the Mainland (map inside)**

The April 30 general meeting is TOO LATE to get your order in for lunch for this seminar. Register early to get lunch. The form is available in this newsletter and on the [BAGS website](#) under the “Workshops & Seminars” page.

BAGS Officers

President

Tina Medlin-Chatham
president@TxBayAreaGen.org

First Vice President

Claudia Grafton
VicePresident@TxBayAreaGen.org

Second Vice President

Susie Ganch
sganch@verizon.net

Recording Secretary

Mary Martin
lmartin497@aol.com

Corresponding Secretary

Lynn Finger
lmcharney2@aol.com

Treasurer

Bill Mayo
bcmayo@earthlink.net

Registrar

Tammy Frey
registrar@TxBayAreaGen.org

Newsletter Staff

Editor / Compositor

Kim Zrubek
newsletter@TxBayAreaGen.org

Proofreaders

Alice Braud-Jones
Shirley Robbins

Photographers

Neil Miserendino

Website

Webmaster

Linda Carrington
linda@TxBayAreaGen.org

Message from the President

Tina Medlin-Chatham

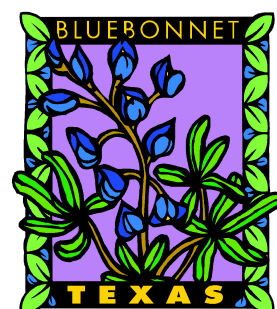


TINA
MEDLIN-CHATHAM

The bluebonnets are blooming and spring is in the air (especially the spring allergies)! We have so many exciting things coming up at BAGS.

Be sure to read the information on our Demolition Day coming to the April meeting and the Emily Croom seminar coming May 1! The registration form and a map to the location are in the newsletter. You don't want to miss this exciting event. Hope to see you all at both events.

Tina



Welcome New Member!

Please extend a warm welcome to our newest members

Robert (Bob) Loyd of League City
Janet Pugh Sikkenga of Houston

This newsletter is a monthly publication of the Bay Area Genealogical Society, a non-profit educational organization dedicated to the people of Harris and Galveston counties, Texas, who have an interest in genealogy.

Articles on genealogy are welcome. Inclusion is based on space available and is subject to editing. Please include permissions with copyrighted material submissions.

Questions or comments on the BAGS Newsletter should be addressed to:

Editor, P.O. Box 891447, Houston, TX 77289-1447, or newsletter@TxBayAreaGen.org

All rights reserved.

BAGS presents

EMILY CROOM Seminar

Saturday, May 1, 2010

9:00 am to 3:00 pm at College of the Mainland

Auditorium (Room L-131) in the Learning Resources Center (LRC) on the Main Campus at 1200 North Amburn Road, Texas City, Texas 77591 ([online map](#))

Early Registration Fee: \$25

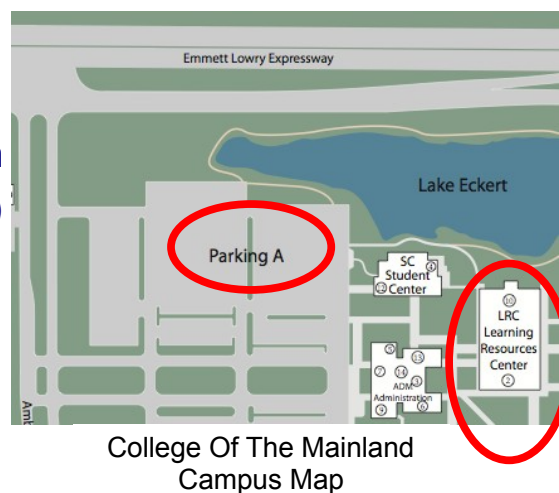
A box lunch can be purchased for \$8 when you register by the deadline of April 24th.

Registration Fee at the Door \$30 (box lunch not available)

Seminar Topics:

- (1) *Lost in 1890? What To Do When the Census is Missing*
- (2) *Hidden in Plain Sight: Details We Sometimes Miss*
- (3) *You Be The Judge: Considering the Evidence*

Emily Croom's website is *Unpuzzling Your Past with Emily Anne Croom* www.unpuzzling.com



Genealogy Equipment?



Times have changed. Paper, pencil, transportation and stamps were essential tools for genealogy research. Now add broadband Internet connection, color printer and scanner, digital camera, digital voice recorder, GPS unit, external hard drive, and flash drives to your tool belt. If you want to learn more about the current capabilities of these newer tool technologies and review model and price comparisons, read the article "Go Go Gadgets" by Dana Schmidt McCullough in *Family Tree Magazine*, March 2010 issue, pages 53 - 59.

Take the Genealogy Fitness Quiz

Quiz is on page 18 in *Family Tree Magazine*, March 2010 issue. Discover if "you are on track" – looking for targeted courses, "fit 'n' fine" – looking for advanced training, or a "genealogical marathoner" ready for professional work.



Want to help make the BAGS Emily Croom Seminar a success? Contact Neil Miserendino to volunteer.

RESEARCH AIDS

Do you have ancestors from Puerto Rico?

The article "Rich Roots" by Lauren Gamber in *Family Tree Magazine* March 2010 issue, pages 29-32 discusses the types of records available and recommends specific books, organizations, archives, and websites for researching records.

Do you have ancestors from Missouri?

Missouri State Archives offers two free databases:

1. Search and view death certificates from 1910-1959 at <http://sos.mo.gov/archives/resources/deathcertificates>
2. Search and view abstracts of birth and death records prior to 1910 at <http://sos.mo.gov/archives/resources/birthdeath>

The St. Louis Public Library has an online search index for obituaries published in the *St. Louis Post Dispatch* during the years of 1880-1930, 1942-1945, 1960-1966, 1992-2009. The results do not provide the obituary but do give you the date it appeared in the paper. Access the online index at www.slpl.org/slpl/gateways/article240117800.asp

The Mercantile Library is indexing its collection of *St. Louis Globe-Democrat* news clippings (1920s-1980s). The results are article subjects and clipping locations at the library. Access the online index at www.umsl.edu/mercantile/special_collections/slma-112.html

The Catholic Archdiocese of St. Louis has a online search engine for their 17 cemeteries. Results provide cemetery, section, lot, person's name, age, and burial date. Access at <http://search.stlcathcem.org/default.aspx>

"Historic Times Along Los Brazos de Dios"

You may enjoy a trip to Liendo Plantation being sponsored by the Texas Heritage Society on Saturday, May 8th.

If you are not familiar with them, they are a one-year old organization based in the Woodlands who regularly puts on historical trips and programs for their membership.

Their website www.texasheritagesociety.org has more information about this and future trips.

Submitted by Alice Braud-Jones

BAGS Cookbooks

You have a chance to purchase BAGS Cookbooks at the Emily Croom seminar on May 1st.

There is a variety of recipes from plain to fancy and everything in between. A great Mother's Day or Father's Day gift. They are also available at each general meeting.



Tour The Cradle

The Daughters of the Republic of Texas *Cradle* is located at 2902 Avenue O½ in Galveston, TX and will be open for viewing, free to Galveston Historic Home Tour ticket holders on May 1, 2, and 8 from 11am to 3pm. This building was originally the law library of William Pitt Ballinger, father of Miss Betty Ballinger. Now known as the Cradle, it is cherished as the place where Miss Ballinger formulated the idea for the organization that became The Daughters of the Republic of Texas. The Cradle was restored in 1993-95 to reflect the original furnishings of the late 1800's. For more information on advanced home tour ticket sales call 409-765-7834 or access online at www.galvestonhistory.org/Galveston_Historic_Homes_Tour.asp



BAGS Events Calendar

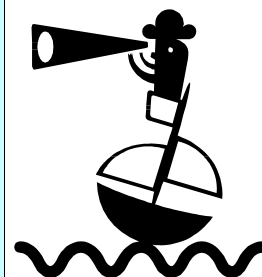
BAGS meetings are held at University Baptist Church (UBC) located at 16106 Middlebrook Drive, Houston, TX 77059 (Clear Lake City) – [online map](#).

**Members welcome to all events.
Public invited to visit general meetings.**

Monday, April 26, 2010	6:30 pm BAGS Board Meeting at UBC in room LC-210
Friday, April 30, 2010	7:00 pm BAGS General Meeting Annual BAGS Demolition Day: Breaking down your research “brick walls”. In the Great Room on 2 nd Floor at UBC Arrive at 6:30 pm for coffee and socializing.
Monday, May 24, 2010	6:30 pm BAGS Board Meeting at UBC in room LC-210
Wednesday, May 26, 2010	9:00 am BAGS Bus Trip to Clayton Library
Friday, May 28, 2010	7:00 pm BAGS General Meeting Arrive at 6:30 pm for coffee and socializing.
Wednesday, June 2, 2010	9:00 am BAGS Bus Trip to Clayton Library
Monday, June 21, 2010	6:30 pm BAGS Board Meeting at UBC in room LC-210
Friday, June 25, 2010	7:00 pm BAGS General Meeting Arrive at 6:30 pm for coffee and socializing.
Monday, July 26, 2010	6:30 pm BAGS Board Meeting at UBC in room LC-210
Wednesday, July 28, 2010	9:00 am BAGS Bus Trip to Clayton Library
Friday, July 30, 2010	7:00 pm BAGS General Meeting Arrive at 6:30 pm for coffee and socializing.
Monday, August 23, 2010	6:30 pm BAGS Board Meeting at UBC in room LC-210
Friday, August 27, 2010	7:00 pm BAGS Annual Show & Tell with Dinner in the Chapel

**At last month’s meeting, Dick Eastman asked,
“Why do we do genealogy?”**

Regardless of your reason, Mr. Eastman encourages us TO BE CURIOUS when researching. Enjoy the process of discovering your ancestors' trials and tribulations that made you who you are.



Committee News

Bus Trips To Clayton Library Mary Martin, County Coordinator

Scheduled dates for future bus trips are:

Wednesday, May 26
Wednesday, June 2
Wednesday, July 28



We meet in front of the **Clear Lake Community Association and Recreation Center at 16511 Diana Lane** ([online map](#)). The county bus departs at **9:00 am** and leaves the Clayton Library at **3:00 pm** to arrive back at the parking lot before **4:00 pm**. Bring a sack lunch, use the library's drink and snack machines, walk to the first floor deli at Park Plaza Medical building, or ride the bus to a nearby restaurant.

If you have any questions or want to reserve seating, please call Mary Martin at 281-332-2435 or e-mail Mary at lmartin497@aol.com. Sign-up sheets are also available at the general meetings. The BAGS website www.TxBayAreaGen.org and the current newsletter always has a current listing of library trips.

If you haven't been to the Clayton Library, consider going with our group this spring and see what you can discover about your ancestors. We have several experienced genealogists who go on the bus and may be able to share some helpful ideas with you. The Clayton librarians are always available to help you get started finding your ancestors and there is also a packet of information the library gives to first time visitors which is very helpful.

Pickup your 2009-2010 BAGS Yearbook

Attendance Report Jeanine Lawrence

For March, 64 members and 11 visitors attended the general meeting and 11 members attended the board meeting.

Membership

Tammy Frey, Registrar

Those of us who were fortunate enough to attend our March meeting had the privilege of hearing an excellent presentation by Dick Eastman. We had a good crowd with a number of visitors and two new members! This brings our membership total to 172 so far for the year. Be sure to mark your calendars for our next meeting, the popular "Demolition Day" meeting. This is a great opportunity to learn from the knowledge and experience of others as we try to break down our genealogical brick walls. We're looking forward to seeing you there!

It is important to keep our information up to date. If you have any changes in or corrections to your contact information during the year, please notify us at Registrar@TxBayAreaGen.org.



Mt. Olivet Cemetery Transcription Project

Neil Miserendino

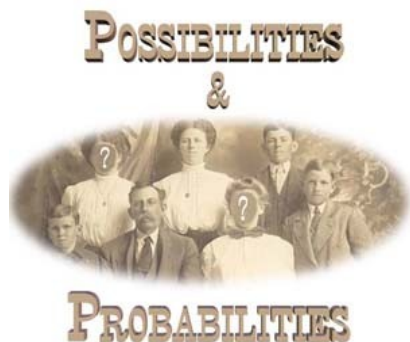
Another part of the St. Bonaventure Garden transcriptions have been verified and will be published in the next *BAGS Quarterly*. There are many paper transcriptions for the St. Dominic Garden and St. Catherine Garden that need to be electronically transcribed. This electronic transcription work is indoors and on your computer. If you are interested, please call or e-mail Neil Miserendino (281-286-8243 or psrambling@aol.com)

BAG\$ Report for March

Bill Mayo, Treasurer

Balance Brought Forward	\$3,048.34
Income	\$297.50
Expenses	-\$340.00
Balance on hand 3/31/2010	\$3,005.84
CD Balance	\$5,242.62

14th Annual Angelina College Genealogy Conference



July 15-17, 2010 in Lufkin, Texas

Featured speakers are **Barbara Brixey Wylie** and her husband **John Vincent Wylie**. Along with other speakers, attendees will have over 24 sessions from which to choose.

Note that two optional all-day Thursday workshops are also offered. The land workshop by **Kelvin Meyers** is a hands-on session and is limited to 25 people. Early registration is recommended if you want to get in this one! A variety of research possibilities before and after the conference are noted - come early and stay late.

Conference sessions, times, registration information, and forms are available online at www.angelina.edu/genealogy/genealogy.html

Comments or questions, please contact Trevia Wooster Beverly by phone 713.864-6862 or e-mail treviawooster@comcast.net

Clayton Library Hours Have Changed

Effective now, the hours open to the public have changed for the Clayton Library Center for Genealogical Research. The library is now open

Monday, Tuesday, & Thursday 10am – 6pm

Wednesday 10am – 8pm

Saturday 10am – 5pm

Closed Friday and Sunday

This new schedule will also effect volunteer shifts at the Clayton House. If you would like to volunteer, contact Steven Bychowski, Clayton Library Volunteer Coordinator, at steven.bychowski@cityofhouston.net or by phone at 832-393-2600.

The decision to reduce service was made in response to the economic downturn and high losses in staff positions within Houston Public Library system wide. Clayton Library Friends (CLF) is addressing their disappointment with HPL management's decision to close the library on a Friday, a day that is often scheduled by groups traveling from other cities for a weekend of genealogical research. CLF believes Monday is a more logical day if indeed there is a financial need to close the library one day per week. CLF will be issuing notification to various genealogical societies to solicit support in contacting their City Council and the Mayor's office to request reconsideration.

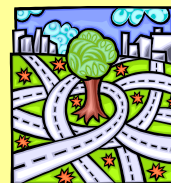
Clayton Library is located at 5300 Caroline, Houston, Texas 77004 ([online map](#)).

Follow the Yellow Brick Road: Planning a Successful Research Trip

Monday, May 24 at 7:00pm

at Friendswood Public Library ([online map](#))

Gay Carter, BAGS member and Reference and Government Documents Librarian at Alfred R. Neumann Library, will provide tips for planning your genealogy research trip and examples of why you might want to take one.



Federation of Genealogical Societies Annual Conference

August 18-21, 2010 in Knoxville, Tennessee

Co-hosted by East Tennessee Historical Society and
Kentucky Historical Society

Program schedule, speakers, special events, registration, hotel and travel information is published on the conference website www.fgs.org/2010conference

At the February 2010 meeting, Bruce Lockett discussed his current marine salvage projects and shared a wonderful assortment of recovered objects.



BAGS

Bay Area Genealogical Society



REMINDER

Next General Meeting
Friday, April 30 at 7:00 pm
Great Room (2nd Floor) UBC
Socializing at 6:30 pm

Deadline for
May Issue is
Wednesday, May 5, 2010

Bay Area Genealogical Society

proudly presents an

EMILY CROOM

Seminar

Saturday, May 1, 2010 ~ 9 a.m. to 3 p.m.

College of the Mainland, 1200 North Amburn Road, Texas City, Texas 77591
in the Auditorium of the Learning Resources Center (see Map or go to www.com.edu)

SEMINAR TOPICS

- *Lost in 1890? What To Do When the Census is Missing*
- *Hidden in Plain Sight: Details We Sometimes Miss*
- *You Be the Judge: Considering the Evidence*

Registration Form

YOUR NAME _____
ADDRESS _____ City _____ ST _____ Zip _____
PHONE _____ E-MAIL _____

Registration Fee \$25 (if received by the April 24 deadline)
Walk-in Registration Fee \$30 (at the door; box lunch not available)

You may bring a sack lunch from home,
or make your selection for a box lunch, \$8 each:

____ ham bread choice: ____ white
____ roast beef ____ whole wheat
____ tuna salad ____ rye
____ turkey

Box lunches consist of sandwich, chips, pickle, and a brownie.
Coffee, water, and soft drinks will be available for purchase throughout the day.

Registration	\$ 25.00
Box Lunch (\$8)	____.00
Your Tax Deductible gift to BAGS Thank You!	____.00
GRAND TOTAL:	\$ ____ .00

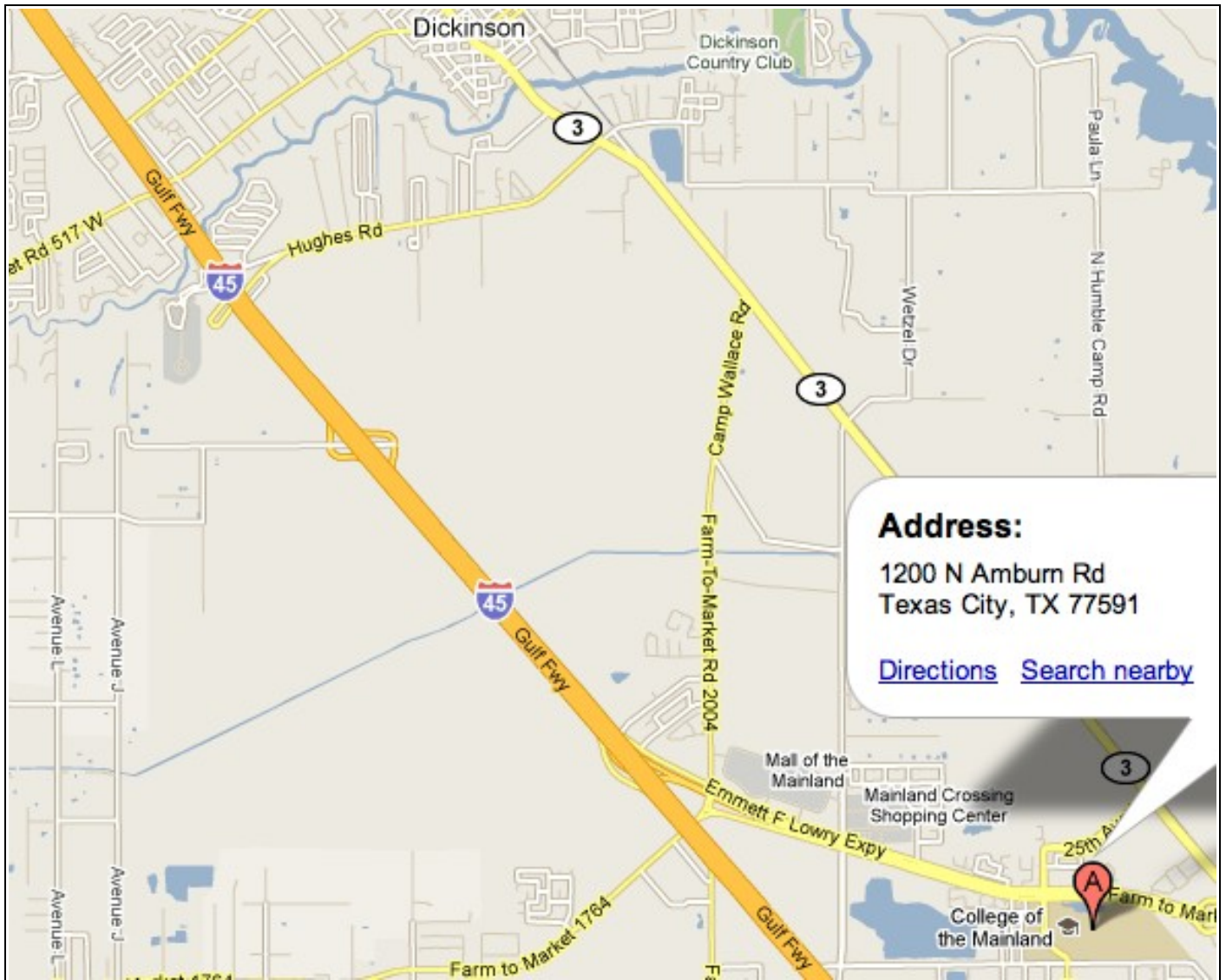
Please mail this Registration Form and your check made payable to "BAGS" to:

BAGS Registrar
Emily Croom Seminar
P.O. Box 891447
Houston, TX 77289-1447

Suggestion: make a copy of this Form and Map for your records!

Questions?? www.TxBayAreaGen.org 832-439-0187

Google Map of the area surrounding College of the Mainland



College Of The Mainland Campus Map (park in Parking Lot A and walk to the Learning Resources Center)

