



# Bay Area Genealogical Society Newsletter

P.O. Box 891447  
Houston, TX 77289-1447

Volume 5, Issue No. 5

January 2006

**NOTE CHANGES**

**Jan 27 6:00 pm  
Room 329 UBC**

## January Meeting: Immigration

### Gems from Genealogists



I came across a website that every beginning genealogist can benefit from. It's called, "*Where Do I Begin? Ten Basic Steps to Researching Your Family Tree.*" The page is sponsored by the Arizona State Library, Archives and Public Records, and may be found at <http://www.lib.az.us/is/genealogy/start.cfm>.

The advice is sound and there are many links to detailed "how-to" resources.

*Dug up by:* Carole Varnado

### "Passenger and Immigration Lists"

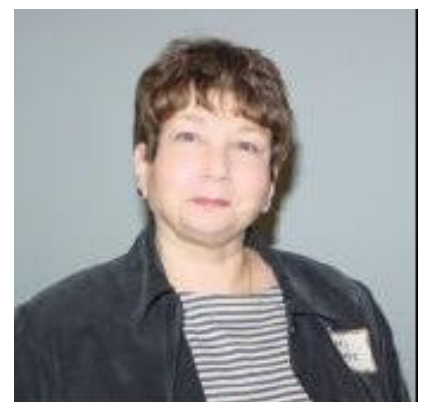
**Marje Harris**

Marje Harris will be speaking about passenger and immigration lists during our January general meeting. She is a very knowledgeable and entertaining speaker with vast genealogical experience and impressive credentials.

Marje began her education at the University of North Texas where she earned her BA in Library Science. She then earned her Master of Library Science at Texas Women's University. Her personal education continues through classes from the National Genealogical Society, the Houston Genealogical Institute, the Salt Lake Institute of Genealogy, and others.

Her many credentials include teaching at Rice University with their continuing education program as well as Houston Community College, in addition to being a certified Genealogical Records Searcher. Other topics on which she has spoken include: Virginia Colonial Records, England Research Introduction, Afro-American Research, Civil War Research, Probate and Military Records, Research in Texas during the time of Spain and Mexico, and Problem Solving Techniques.

Currently, Marje is the Manager at Clayton Genealogical Library where she has worked for 28 years, making a total of 32 years with the Houston Public Library System. She holds memberships with the American Library Association, RUSA Round Table, Genealogy Committee, Texas Library Association, and Genealogy Round Table.



### Inside BAGS ---

- 2 President's Message
- 3 New Internet Publication
- 4 "Texas Stand to Arms!" / Sunday Meeting Alternate
- 5 Calendar of Events
- 6 Featured Ancestors
- 7 Committee Page
- 8 Online Extra (appears in online version only)

## BAGS Officers

**President – Loren Martin**  
281-332-2435  
[president@TxBayAreaGen.org](mailto:president@TxBayAreaGen.org)

**1<sup>st</sup> Vice Pres. -- Alice Braud-Jones**  
281-380-8920  
genealijonz at houston.rr.com

**2<sup>nd</sup> Vice Pres. -- Dick Warren**  
281-461-1472  
[dick@merlins-web.com](mailto:dick@merlins-web.com)

**Recording Secy. – Mary Martin**  
281-332-2435  
lmartin497@aol.com

**Corresponding Secy. – Shirley Lindquist**  
281-286-4125  
[shirleylindquist@sbcglobal.net](mailto:shirleylindquist@sbcglobal.net)

**Treasurer -- Resa Hennings**  
281-326-4936  
[resa@resa.us](mailto:resa@resa.us)

**Registrar – Rose Mary Fritz**  
281-337-5495  
[registrar@TxBayAreaGen.org](mailto:registrar@TxBayAreaGen.org)

## Newsletter Staff

*Editor*

**Linda Carrington**

*Compositor*

**Doug Wilson**

*Proofreaders – Barbara Stanley*

**Alice Braud-Jones**

*Photographers – Linda Goerland*

**Neil Miserndino, Leo Waltz**

*Distribution – Lee Jared*

*5 Gen. Charts – Carole Varnado*

This newsletter is a monthly publication of the Bay Area Genealogical Society, a non-profit educational organization dedicated to the people of Harris and Galveston counties, Texas, who have an interest in genealogy.

Articles on genealogy are welcome. Inclusion is based on space available and is subject to editing. Please include permissions with copyrighted material submissions.

Questions or comments on the BAGS Newsletter should be addressed to:

Editor, P.O. Box 891447,  
Houston, TX 77289-1447, or  
[lmc62@houston.rr.com](mailto:lmc62@houston.rr.com).

All rights reserved.

## Message from the President

**Loren Martin**

Your help is needed for our Bay Area Genealogical Society to accomplish the educational and fun goals for 2006 **that you would like to see happen.**

I would like for your BAGS Board, together with your participation, to make this a **“CAN DO YEAR”** and provide the benefits that you want. However, we need to **know** what the membership wants. How does the membership want to grow and expand with new benefits built on the strong foundation that is in place?

All members are encouraged to “speak up” at either the monthly membership meeting, the monthly Board meeting, or by telephone to your Board or committee chairs. Volunteer to be a part of the “construction gang” and help BAGS achieve everything you would like to see it provide.

All members are encouraged to ask themselves **“what can I do?”** to make BAGS even better. Please take the time to analyze where you would like to see BAGS grow and how you can help obtain these goals. Help can be in many forms, depending upon our own individual situation.

The following action items have been discussed.

- Participating in conducting area genealogy seminars
- Conducting BAGS book exchanges to make more information available to all
- Publishing a cookbook of favorite recipes
- Establishing a Telephone Committee
- Establishing a ride-share program to help all members be able to attend meetings
- Working on archiving and saving valuable historical information
  - Cemetery and funeral home records
  - Galveston/Harris Court records

The Christmas dinner was a wonderfully enjoyable evening! The committee did a very good job and the many individuals who contributed to making this a success definitely deserve a **huge thank you**. For those who were unable to attend, remember you have another opportunity next December and I hope that everyone is able to join together then.

Remember that our January 27<sup>th</sup> monthly membership meeting is a “pot luck” affair where everyone who comes will be asked to bring a dish to share or donate to defray the related costs for room set-up and the plates, utensils, napkins, and beverages.

**Happy New Year**

*Loren*



## New Internet Publication -- Reviewed by Trevia Wooster Beverley

*Family Chronicle* publishers have begun a new Internet magazine and are offering a PREVIEW issue which can be accessed from your computer. It does not take long to load, but it will use a lot of ink to print as a lot of color is involved. However, the 24 pages do have a lot of information and was worthwhile for me to print.

Be sure to read the editor's opening remarks. Halvor Moorshead gives some interesting views. We must remember, however, that there are still a LOT of errors and a lack of much documentation in what we find on the Internet. While this new medium can benefit us in our genealogical research, and we all find ourselves using it more and more, we must remember that what is online now may not be there tomorrow. The Internet is a wonderful tool but we still need libraries and archives and courthouses and museums, etc.

And, if you've not been frequenting your local genealogy library or supporting its 'friends' or support group, be sure to do so in this New Year - otherwise, it may not be there when you do need it!

I think you'll find this new publication well put together with a lot of good ideas and information. The cover price will be \$5.95 + tax at the newsstands and bookstores, so certainly the introductory subscription price for \$20 for the six issues is a bargain!

---

From: Victoria (*Family Chronicle/History Magazine*)

Sent: Wednesday, January 04, 2006 12:33 PM  
Subject: *Internet Genealogy Magazine*

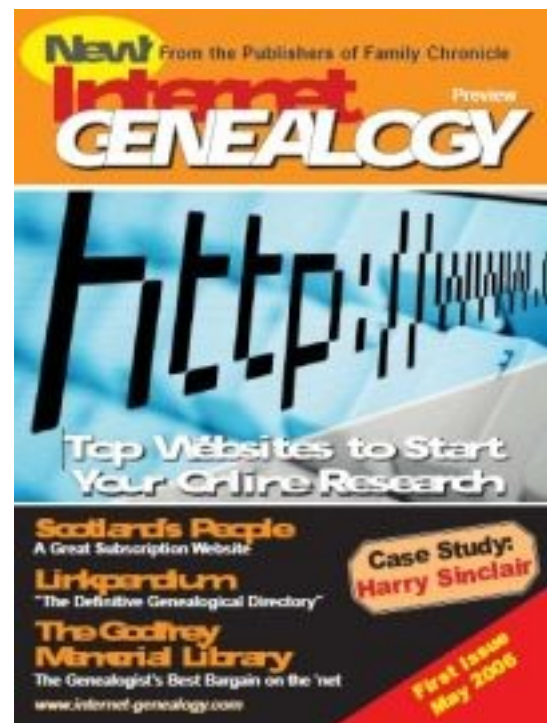
The publishers of *Family Chronicle* are pleased to announce the launch of a new magazine, *Internet Genealogy*. As the title implies, the magazine will deal primarily with conducting genealogy research using the resources of the Internet

Halvor Moorshead, publisher of *Family Chronicle*, says, "Although genealogy is more popular than ever before, newcomers to the field are overwhelmingly conducting their research using the Internet. Most of them limit their searches to Google because they don't know what else to do. Sometimes they find a family tree that includes their known ancestors and takes them back generations. There is nothing wrong with this but it is only scratching the surface. Many traditional genealogists have

been disdainful about the 'net. They tell you the information cannot be verified, that it is full of errors and that, in any case, only a fraction of the records are available. I admit that I held this view for some years but the rate at which new databases are coming online is staggering and many of these new records are linked to the original images, making them effectively original sources."

A 24-page preview copy of *Internet Genealogy* is featured in *Family Chronicle's* Jan/Feb 2006 issue with several sample articles. This preview copy can also be downloaded from *Internet Genealogy's* website, [www.internet-genealogy.com](http://www.internet-genealogy.com).

*Internet Genealogy's* first full length issue will be available on newsstands and to subscribers in late February, with a cover date of May 2006. *Internet Genealogy* will be published six times a year with a subscription price of \$28. However, for a limited time, *Internet Genealogy* is available at an introductory subscription rate of \$20. For more information, please see: [www.internet-genealogy.com](http://www.internet-genealogy.com).





Texas Land Commissioner Jerry Patterson's Great Military Map of Texas is almost here! The Great Military Map of Texas is a brand new classic, hand-drawn map from the Save Texas History Program of the General Land Office that brings 300 years of Texas military history to life. Featuring 28 key military events over the span of three centuries through text and artwork, the Great Military Map of Texas harkens back to the artistry and craftsmanship of the great historic maps of Texas. The map includes forts, camps, battle sites and historic towns and settlements.

Created entirely by the draftsmen and artists of the state's oldest agency, this one-of-a-kind collector's map is available only through a donation to the Texas General Land Office Save Texas History Program. Now a special early-bird edition Great Military Map of Texas is available before it goes on public sale March 2<sup>nd</sup>. For a \$500 contribution to Save Texas History, you will receive a limited edition, hand-numbered Great Military Map of Texas "Vanguard" edition signed by draftsman Joan Kilpatrick, map artist Kenny Helgren and Commissioner Jerry Patterson.

In addition to this special map, you will receive a portfolio of the never-before-seen Helgren artwork created exclusively for the project, as well as a thank you letter from Commissioner Patterson. Proceeds from map donations are dedicated solely to the Save Texas History Program of the General Land Office. The money will be used to raise awareness about Texas history and the need for map conservation.

This special map is a must-have for history buffs, map lovers, and Texana collectors everywhere. Call or send an email to <http://www.savetexashistory.org> today for your special "Vanguard Edition" package of Texas Land Commissioner Jerry Patterson's Great Military Map of Texas and help us Save Texas History!

reported by Trevia Wooster Beverley

Your hard-working committee, chaired by Claudia Grafton, is still investigating locations for a possible Sunday evening meeting. As we have previously stated, this is a slow, time-consuming process to identify, contact, wait for the various individuals to then take our inquiry to their boards or membership and answer their questions. It has been difficult to find a suitable Sunday location.

Most churches want one of their own members to be involved in any other organization that uses their facilities. Non-religious organizations usually require significant monetary expenditures to use their facilities; available locations are not centrally located; etc. In addition, as it has been previously reported, the members who have expressed a preference for meeting days seem to be evenly split between preferences for Friday or Sunday meetings. Also the attendance at our Friday meetings has been growing to be about the same as the previous Sunday meetings. For those who want to meet on Sunday, please help this committee to find an appropriate location to present to the membership.

**TEXAS**  
**Stand To Arms!**

TEXAS LAND COMMISSIONER JERRY PATTERSON'S  
**GREAT MILITARY MAP**  
 OF  
**TEXAS**  
 \* 1685 - 1916 \*

**IS AVAILABLE SOON**

A CLASSIC MAP HANDDRAWN  
 IN THE HISTORIC STYLE OF THE 1800's

- HISTORIC BATTLES AND EXPEDITIONS
- MILITARY FORTS AND CAMPS
- RIVERS, MOUNTAINS, TOWNS PAST & PRESENT
- 300 YEARS OF HISTORY
- DESCRIPTIONS OF IMPORTANT EVENTS BY HISTORIANS
- SALE OF MAP HELPS SAVE TEXAS HISTORY FUND
- DONATION FOR MAP IS TAX DEDUCTIBLE

**SPECIAL NOTICE!**  
 LIMITED EDITION  
 SIGNED & NUMBERED  
 Great Military Map of Texas  
 "Vanguard Edition"  
**AVAILABLE BEFORE PUBLIC RELEASE!**

TELEPHONE  
**1-800-998-4GLO**  
 COMPUTING MACHINE  
 SAVETEXASHISTORY.ORG

# Events Calendar

BAGS Meetings are held at University Baptist Church (UBC) Members are invited to attend all meetings	
■ <b>Monday, January 23, 2006</b>	4:30 pm BAGS Board Meeting, Room LC-210, UBC
■ <b>Friday, January 27, 2006</b>	6:00 pm BAGS General Meeting, Room 329, 3 <sup>rd</sup> Floor, UBC -- Potluck "Immigration and Passenger Lists" Speaker: Marje Harris
■ <b>Wednesday, February 1, 2006</b>	9:00 am Harris County Archives trip, meet @ Clear Lake Bible Church, El Dorado @ Hwy 3, contact Judy Henderson, 281-482-7888 or judy38 at hal-pc.org
■ <b>Wednesday, February 8, 2006</b>	9:00 am BAGS Bus Trip to George Memorial Library, Richmond, TX
■ <b>Monday, February 20, 2006</b>	4:30 pm BAGS Board Meeting, Room LC-210, UBC
■ <b>Friday, February 24, 2006</b>	6:00 pm BAGS General Meeting, Great Room, 2 <sup>nd</sup> Floor, UBC "Migration Trails and Using Maps" Speaker: Bruce Krewinghaus
■ <b>Thursday, March 2, 2006</b>	9:00 am BAGS Bus Trip to Clayton Library
■ <b>Tuesday, March 14, 2006</b>	9:00 am BAGS Bus Trip to Clayton Library

## The "GLO" Returns!

The "GLO" in this case is the General Land Office of the U.S. Bureau of Land Management. One of the more popular online sources, the GLO had a database of Federal Land Patent records, indexed and linked to images of the patents themselves.

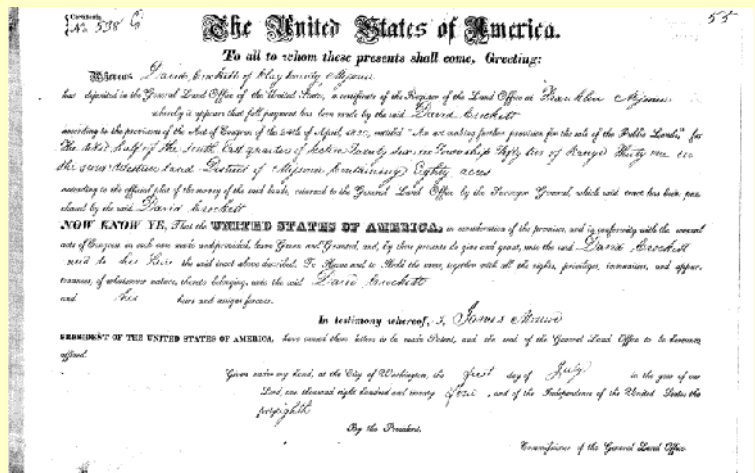
For a while, the database was taken down because of security concerns and a dispute with certain Native Americans.

The good news is that these issues have been resolved. You can access these data by going to:

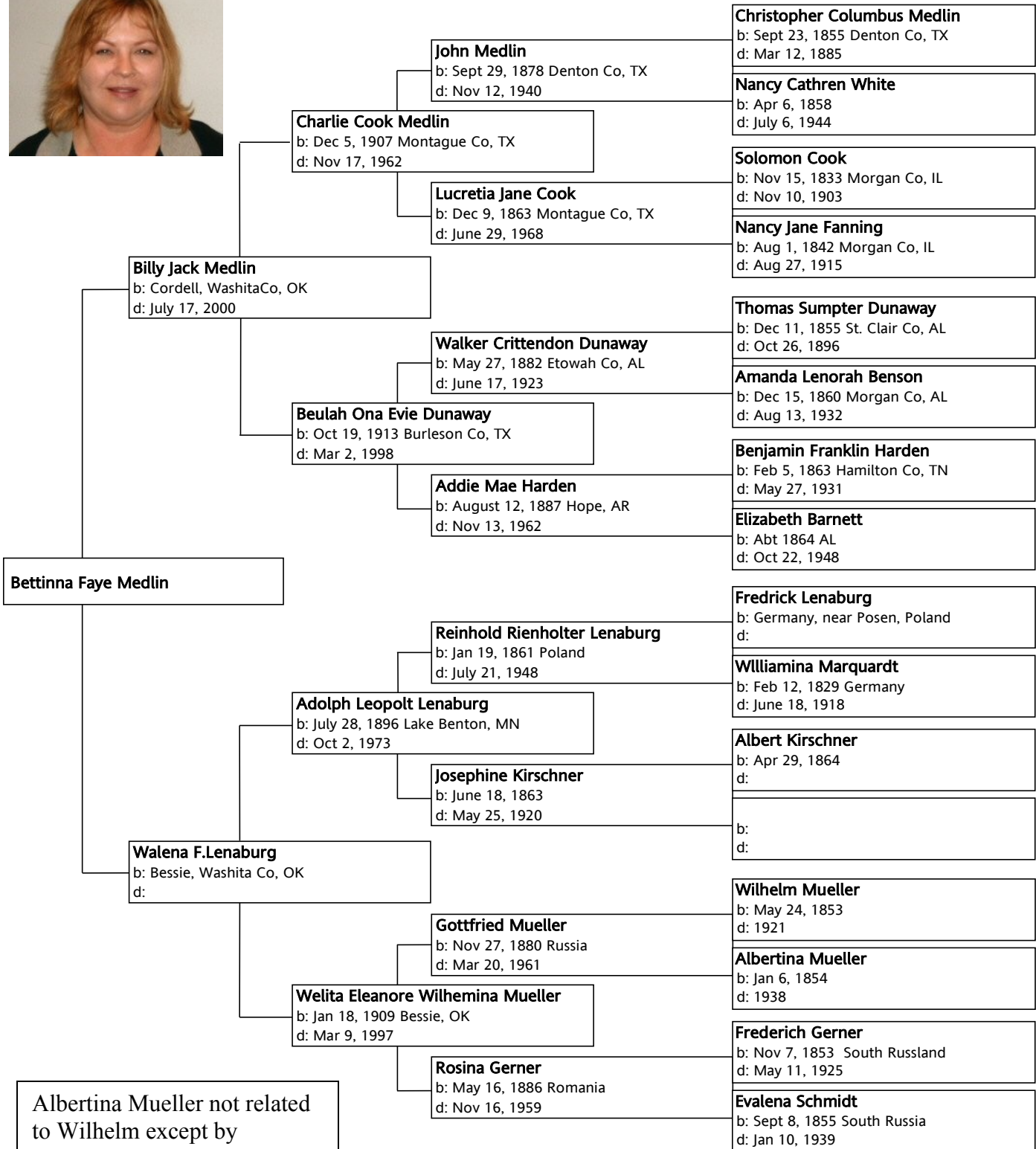
<http://www.gloreports.blm.gov/>

Thanks to Trevia Wooster Beverley for calling this event to our attention.

Reported by Alice Braud-Jones



# Ancestors of Tina Medlin-Chatham



Albertina Mueller not related to Wilhelm except by marriage. Same last name was a coincidence.

# Committee News

## Library Trips

Mary Martin, County Coordinator

We have two trips to Clayton Library and one to George Memorial Library scheduled through March. Please see our Events Calendar on page 5 for those dates.

I have scheduled Wednesday February 8<sup>th</sup>, as the date to go to the George Memorial Library. We need four more people to register or the county will cancel this trip. Bring a sack lunch with a drink, and the library will let us use a room for our lunch. This library has some very nice collections, please refer to our December issue for a partial list. There are about half a dozen readers and a copier in the genealogy room of the library. Our October 2005 speaker, Wolfram Von Maszewski, is in charge of the genealogy department of the George Memorial Library. He has considerable knowledge about German research. If you are interested in going to this library, please let me know as soon as possible.

We have a new date scheduled to go to the Clayton Library which is Thursday March 2<sup>nd</sup>. We have not tried to schedule a trip to the library on a Thursday before so please let us know how this works for you and make plans to attend.

We will meet in front of the Clear Lake Community Association and Recreation Center at 16511 Diana Street. We will depart in the county bus at 9:00 am and leave the library at 3:00 pm. We are back to the parking lot before 4:00 pm. If you have any questions or would like to schedule the trips, please call me at 281-332-2435, or e-mail me at [lmartin497@aol.com](mailto:lmartin497@aol.com). We will also have sign-up sheets at the meetings. We have an interesting time searching for ancestors, and we enjoy each others company riding on the bus and exchanging ideas.

The Society's website, [www.TxBayAreaGen.org](http://www.TxBayAreaGen.org), always has a current listing of library trips. Bring a sack lunch and join us to see what you can find.

## BAG\$ Report

Resa Hennings, Treasurer

Balance brought forward	\$4,472.71
Income	+\$200.50
Expenses	-\$257.25
Balance on hand 12/12	\$4,415.96

## Membership

Rose Mary Fritz, Registrar

Our thanks go to members David Julian Cate and Bonnie Conrad and family who renewed their memberships at the Contributor level. Thanks also go to Resa and Eric Hennings, Jeanine Lawrence, and Dick and Glenda Warren who renewed at the Patron level.

Membership applications for new or renewing members can be found on the BAGS website. Send a completed application form and your check for \$20.00 for single membership or \$25.00 for family membership to:

BAGS Registrar  
5001 Casa Grande  
Dickinson, TX 77539-7504

Better still, bring your application to our next meeting on Friday, January 27<sup>th</sup> and enjoy Marje Harris and her presentation on Immigration and Passenger Lists.

Members, please notify me at [Registrar@TxBayAreaGen.org](mailto:Registrar@TxBayAreaGen.org) of any changes in name, address, email or phone number.

## Quarterly

Susie Ganch, Editor

Please send articles and records for inclusion in the Quarterly. I know you all have stories and interesting research you have found in your genealogical quest. Please, let us use some of that in our publication. We can also publish our Bible records, vital records, cemetery transcriptions or any other interesting historical documents. Have your ancestors or family members written anything about their history? We could use it for the Quarterly.

I would also like to see some queries in our quarterly. I have had a query section in only one quarterly this year because I have not received any submissions of queries from members.

I have thoroughly enjoyed the articles submitted during the last year and we have had many compliments on our Quarterly. Let's continue to provide information, articles, and submissions to promote our history and our society. Please send submissions to me by email at [sganch@verizon.net](mailto:sganch@verizon.net). Or you may mail it to me at:  
2393 Golden Shores Lane  
League City, TX 77573.



George Memorial Library  
Richmond, Texas

**REMINDER**  
General Meeting Friday  
January 27, 6:00 pm, **Room 329**  
(**3<sup>rd</sup> Floor**) UBC

Deadline for  
February Issue is  
February 4, 2006

BAGS website:  
[www.TxBayAreaGen.org](http://www.TxBayAreaGen.org)

