



# Bay Area Genealogical Society Newsletter

P.O. Box 891447  
Houston, TX 77289-1447

Volume 2, Issue No. 1

September 2002

## Using Manuscript Collections For Research

Gay E. Carter, a knowledgeable genealogist and popular speaker, will discuss the use of manuscripts at the next meeting of BAGS on September 29th. Her subject will be "Using Manuscript Collections: NUCMC and Beyond." In this presentation, she will talk about how to find manuscript collections (letters, diaries, etc.) using both the National Union Catalog of Manuscript Collections, known as NUCMC (now in the electronic database "Archives USA"), and web searches.

Gay is the Reference/Documents Librarian at the Alfred R. Neumann Library, University of Houston-Clear Lake, located at 2700 Bay Area Boulevard in Houston. She first became involved in genealogical research in 1970 and is active in several societies, such as: Houston Genealogical Forum; Clayton Library Friends, where she serves on the board of directors; National Genealogical Society; and Association of Professional Genealogists. She is a member of the National Society, Daughters of the American Revolution, and is an alumni of the Samford University Institute of Genealogy and Historical Research.



### In This Issue:

- 2 From the President
- 3 Committee News
- 7 The Five Generation  
Chart, Part 1
- 8 Technology Aids  
Genetic Research
- 9 Upcoming Events

Those of you who heard her talk last May will remember that she offered to give anyone interested a guided tour of the UHCL Library facilities. The offer is still available, and you will find out how to locate invaluable information that is available right here in the community for genealogical research. You can contact her at 281-283-3914 or email her for a tour at [CarterG@CL.UH.EDU](mailto:CarterG@CL.UH.EDU).

## From the President

by Carolyn Traweek Hellen



It is with great pride that I assume the role of President for a second term, and I thank you for your vote of confidence. The past year is one that I will never forget,

and I look forward to the coming year being even more memorable.

We have made great strides in becoming a genealogical society we can all be proud of, and it has only been through your efforts that this was accomplished. We still have a huge workload ahead of us, and I hope that everyone will be willing to help share the load.

The first cutoff for the surname database project is at the end of this next meeting. I will be in the University Baptist Church Library at 3:30pm to help any of you who have not turned in your five-generation chart or surname database. The library is located on the first floor across from the chapel where the August meeting was held.

Carolyn Farmer is still in charge of this project, and she hopes to have it completed and available for sale at the state convention in

November. So dig out that Bible, or whatever papers you have accumulated, and bring them to the church so we can help you with your five-generation chart or surname database.

I appreciate your comments on the members' survey, and we are in the process of addressing your comments and suggestions. If you have not turned in your dues and survey, please take the time to fill out the forms and bring them to the meeting on Sunday, September 29th. There have been several suggestions that will really help the officers provide a better society, so here is the chance to make your ideas count.

Unfortunately, my telephone is not ringing off the hook with volunteers to take on the publicity chairmanship. This is such a vital position. Each time our meetings are published in the newspaper, new members appear. You don't have to be able to write, just organized enough to see that it gets distributed.

On a happier note, our society is now officially incorporated. Our paperwork was finally completed and was approved by the state.

See you at the next meeting,

*Carolyn*

### **BAGS Officers**

President, Carolyn Hellen	281-486-0406	CRHellen@worldnet.att.net
1st Vice President, Carolyn Farmer	281-480-6419	cafarmer@houston.rr.com
2nd Vice President, Dick Warren	281-461-1472	dick@merlins-web.com
Recording Sec., Diane Thompson	281-337-3672	dst@hal-pc.org
Corresponding Sec., Tammy Frey	281-286-1486	tfrey99@hotmail.com
Treasurer, Dottie Crabb	281-326-4076	dotcrabb2@juno.com
Historian, Karla Chenault	281-282-9805	karlam@prodigy.net
Registrar, Neil Miserendino	281-286-8243	psrambling@aol.com

### **BAGS Newsletter Staff**

Managing Editor, Tammy Frey  
Editor, Nate Grimes  
Production, Linda Carrington  
Distribution, Carol Moody  
Consultant, Carole Varnado



## Committee News



### Membership Report

**Neil Miserendino, Registrar**

At the August meeting, we started the annual membership renewal process. If you have not yet renewed, please do so as soon as possible. The policy of this genealogical society is to supply each member with all of the quarterlies and newsletters for the fiscal year, September through August. Dues are not prorated, so, for those of you who joined recently, you need to renew your membership for the 2002-03 member year.

We had seven new members join at the August meeting. With a loss of three members, the total membership now stands at 214.

---

### BAGS Programs for 2002-2003

**Dick Warren, Program Director**

We have exciting topics for this new year. Some are "still in the hopper," so stay tuned.

This month, Gay Carter kicks off the year with a program you won't want to miss entitled "Finding and Using Manuscript Collections: NUCMC and Beyond."

In November, Robert de Berardinis will be providing a program on land records. Land records can provide great tips on where our ancestors lived and may be helpful in determining how they got there.

One of the research frustrations is in identifying our female ancestors. For the February

program, Emily Croom will talk on "The Other Half of the Story: Researching Female Ancestors."

Some of the other programs we are working on will be topics such as: what is contained in county records that could aid your search; military records for all wars; "Breaking Through the Salt Water Curtain and Locating your Ancestor's Home in Europe"; 1890 census: "Sifting through the Ashes"; using tax records; using the U. S. GENWEB to get information about your ancestors; resources contained in the National Archives; how to write the story of your life; English research; molecular (DNA) genealogy; and more.

Mark your calendars now and plan to attend each meeting!

---

### Hospitality

**Leslee Fehlman, Hospitality Chairman**

Thank you all so very much for making our August "potluck" meeting such a success. The food was delicious. For those of you who have not given us the recipes of the homemade dishes you brought, will you please give them to me at the next meeting? These are for our cookbook.

We would like to try something new. Those people I ask to bring food each month will be "Greeters." The greeters should come to the meeting at 4:45pm to welcome the members and guests as they enter the meeting room and to introduce the guests to a few members so they will feel welcome.



## Committee News



### Quarterly

by Resa Hennings

The Quarterly is in need of original articles, research tips, family histories, anecdotes, and queries. Please send them to the Editor, Resa Hennings, at 439 Bayou View Drive, El Lago, Texas 77586 or by email to [resa@resa.us](mailto:resa@resa.us).

### County Bus Program

by Nancy Irle

Participation in the East Harris County Senior Citizens' Bus Program is designed for senior citizens, ages 55 and over, with special consideration to spouses. As a member of the South Channel Program, BAGS is eligible to utilize Harris County buses each month. In order to continue to receive the privilege of using these buses, our group must fill the capacity of the buses. Please mark your calendars for our excursions and plan on being aboard for fun, fellowship, and inexpensive travel as we begin our new society year.

Please note that we will be departing from the Clear Lake Courthouse Annex, which is a change from last year. All trips will depart at 9:00am and return at approximately 4:00pm. Please check the following schedule for more details:

1. October 16, 2002

Destination: Clayton Library

Vehicle: 16-passenger van (**We must have at least 10 members sign up!**)

2. November 5, 2002

Destination: Clayton Library

Vehicle: 24 passenger bus (**We must have at least 15 members sign up!**)

3. January 22, 2003

Destination: Liberty Library and Archives, Price Daniel Home/Museum

Vehicle: 24 passenger bus (**We must have at least 15 members sign up!**)

4. February 7, 2003

Destination: Galveston/Rosenburg Library (or browse the Strand)

Vehicle: 24 passenger bus (**We must have at least 15 members sign up!**)

If you have any questions concerning these trips, please contact Nancy Irle, County Coordinator, at 281-482-8261.

### Message From the Vice President Carolyn Farmer

This will be my last article to the members as Vice President. My primary function this first year has been to set up the **surname database**. We now have over 200 members, but only 45 members have input data to the database. This database will be a very useful tool for the society.

During the August Board Meeting, it was decided that the next general meeting on

**Continued on Page 5**



## Committee News



### From the Vice President Continued

September 29th, 2002 will be the **deadline**, so we can compile our first edition of the membership surnames and have the booklet available to sell by November. So, if you want your **surnames** in the first edition, you must get your information to me by **September 29th**. You can mail it to me or you can email me at [cafarmer@houston.rr.com](mailto:cafarmer@houston.rr.com).

Please put your data in **alphabetical** order in the following format.

Your Name	Telephone #	Email Address
<u>SURNAME</u>	<u>LOCATION</u>	<u>DATES</u>
Banks	GA/TN/TX	1800-1900
Gray	NY/PA/KY/OK	1750-Present
Miller	VA/GA/TX	1660-Present
Woods	Eng/VA/MO	1600-1800

I will continue to maintain the Surname Database as a Committee Chairman. It will be an ongoing project with the idea of publishing new editions periodically. It would be nice to have a "large" first edition surname database. It would speak well of our society. It has been a pleasure to serve and to be a part of this great undertaking.



### Check It Out!

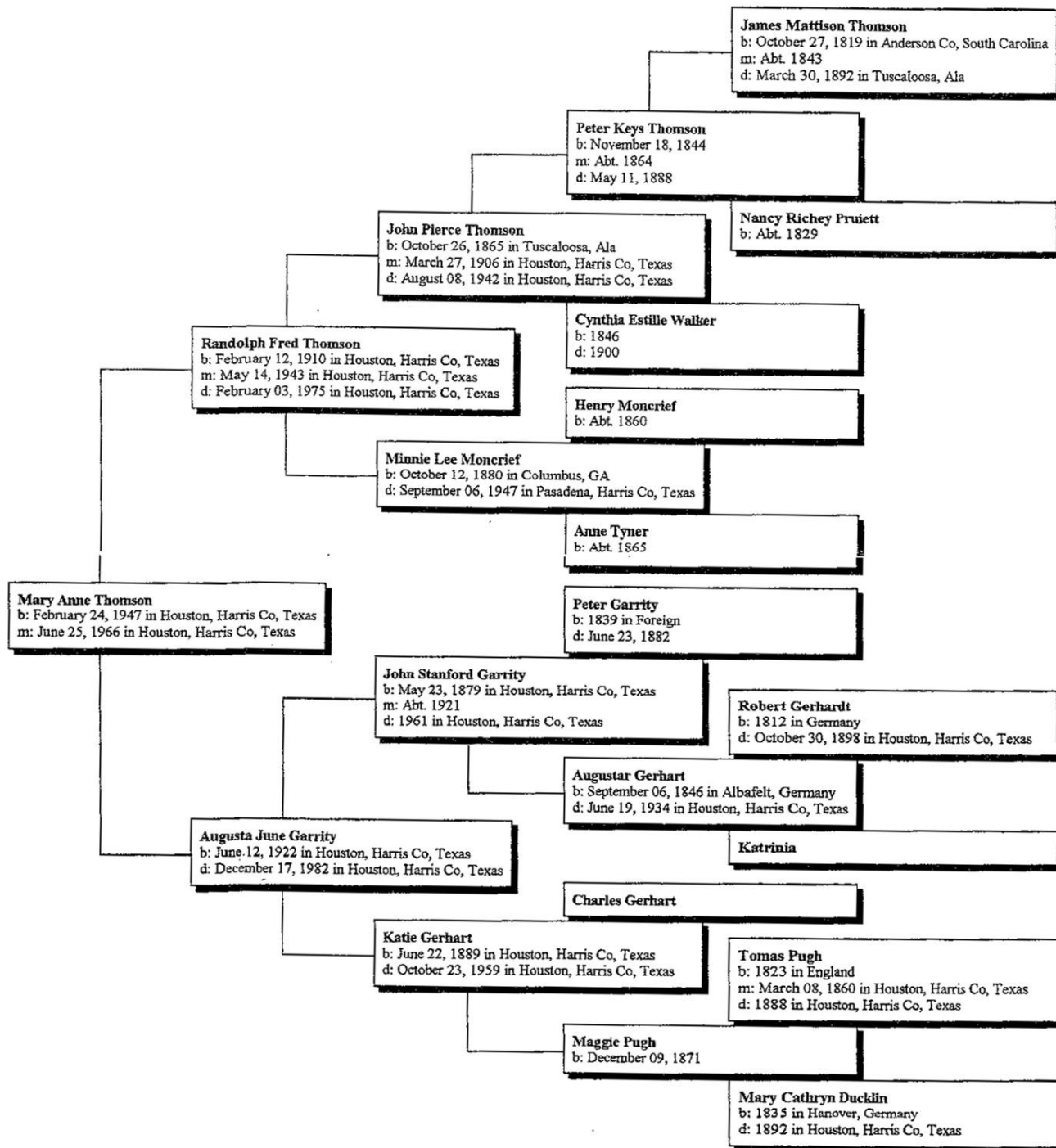
#### Bay Area Information on Web Site

Bruce Compton, son of BAGS member Ginger Compton, has a website of interest to researchers in the Bay Area. It includes extractions from the La Porte Chronicle, transcriptions of 4 Harris County cemeteries, and family information. As a bonus, the cemetery transcriptions include tombstone photos. View at: <http://freepages.genealogy.rootsweb.com/~dbcompton/>.

### This 'N That

*The Civil War*, a film by Ken Burns, returns to PBS starting September 22nd. It first premiered in September 1990. The response was phenomenal, and it remains the highest-rated program in PBS history. The updated version will include a new introduction and special interviews. The content has not been altered, only updated with today's technology. For more information, visit the website at: <http://www.pbs.org/civilwar/>. This information was supplied by Trevia Wooster Beverly.

## Ancestors of Mary Anne Thomson (Clingan)



---

# The Five Generation Chart, Part I

By Neil Miserendino

All members have been asked to provide a 5-generation family chart. This is the first of a series about the BAGS 5-generation chart project and will deal with some commonly asked questions:

## *What is a 5-generation chart?*

It is a chart that lists 5 generations of your family tree. Examples of these charts have been published in our more recent newsletters and in the quarterlies. You can use those charts as a guide to filling out your own. If you need a form, we will have blank forms available at the general meetings. If you need further assistance with your chart, ask an officer at one of the meetings to help. They will be glad to do so.

## *Why is it important for me to turn in my five-generation chart?*

One of the ways we can help each other in this society is to help with our research. We have published a yearbook that lists surnames that our members are researching. Using the information in the five-generation charts, I will be publishing a list of geographical areas that our members are researching. We will be able to share what we know about researching a particular state or country to help the other members.

## *If I turn in a chart, will it be published?*

Your chart will possibly be published at some time, unless you prefer that it not be. If you do not want your five-generation chart published, simply write on it "Do not publish."

## *I do not know all of my family members, how can I fill out the chart?*

You can fill out as much as you know right now. One of the reasons we have this project is to determine where the members need assistance in their research.

I call on those members who have not submitted their five-generation family charts to please mail them to this society's post office box or to bring a copy to the September meeting. In the next installment of this series, I will list the most common states and countries that members are researching. In a later installment, I will be matching the members by geographic area of research.



Carolyn Farmer and Carolyn Hellen  
entertaining us during the August  
meeting.

---

# Technology Aids Genetic Research

by Tammy Frey

Genealogy is believed to be one of the fastest growing hobbies in the U.S. Part of the reason for this is the fact that the Internet has provided easy access of information to people for whom it might not otherwise be available. Now another type of technology is becoming available to assist genealogists: DNA testing.

Various family groups and organizations are collecting genetic data to try to scientifically determine family lines. Certain genetic markers are used to match lines of descendancy and identify common ancestors in a family group. In the past few years, there have been stories in the media about family and racial genetic testing that has been done. The question of whether Thomas Jefferson was the father of a child by Sally Hemmings was one case. There have been numerous studies of Jewish groups done as well. What many people may not realize is the availability of genetic testing for their own family group.

Because of lost records, name changes, adoption, and various other circumstances, we all have "brick walls" in our research. In an effort to break down these brick walls, some family

associations have established databases for their particular surname group. Other groups, such

as Brigham Young's Molecular Genealogy Research Group, are attempting to

establish a central database which would provide another avenue for genealogical research. The Brigham Young project is an ambitious, world-wide attempt to gather as much genetic information as possible to aid in determining links between family groups.

Before you decide to participate in a genetic study, be sure you read all of the information carefully. Ask questions. What are the requirements of the study group? What are the costs of the test? How many genetic markers will the test identify? Who will have access to your personal records? Where will they be stored? While the possibilities of using genetic research as another genealogy tool are exciting, we need to remember to be cautious about privacy issues.

Interest in the idea of using genetics in genealogy is growing rapidly. There are a number of internet sites you can find by using your search engine and entering the words "genetic genealogy." Below I have listed a few of the many sites you can find:

- <http://genealogy.about.com/library/week-ly/aa102400a.htm> - This is an article about the BYU Molecular Genealogy Research Group,

**Continued on Page 9**



## Bay Area Genealogical Society Membership Form

If you are interested in joining the Bay Area Genealogical Society, please fill out this form and send it with your check for \$10 for full-time student, \$20 for individual, \$25 for family, or \$30 for businesses and organizations. Make your check payable to **Bay Area Genealogical Society** and send to: Registrar, P.O. Box 891447, Houston, TX 77289-1447. If you have any questions about the society, please call our president, Carolyn Hellen at 281-486-0406. ☐ Check here for Renewal

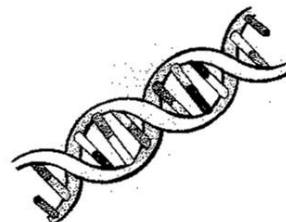
Name(s): \_\_\_\_\_

Address: \_\_\_\_\_

Telephone: \_\_\_\_\_ Email Address: \_\_\_\_\_

## Genetic Research Continued

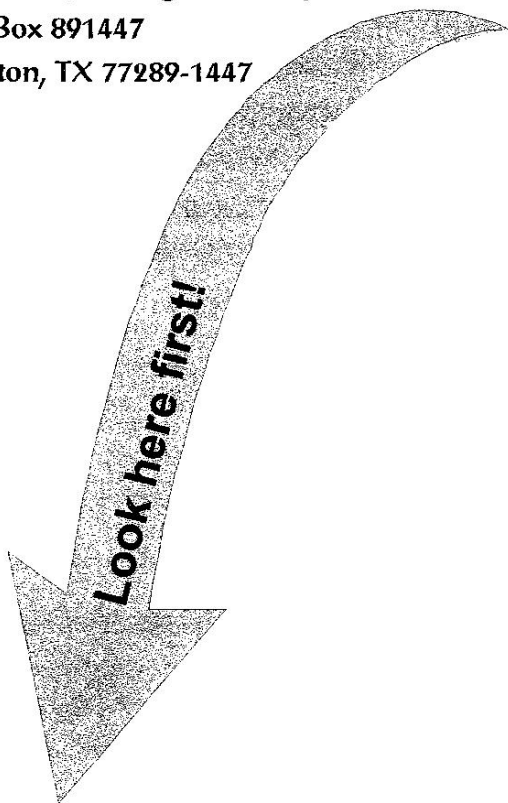
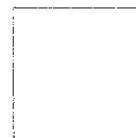
- <http://molecular-genealogy.byu.edu/events.htm> - Dates and locations of the BYU information and sample collection (for testing) meetings,
- <http://www.duerinck.com/surname.html> - A list of links to DNA surname projects,
- <http://www.ancestry.lycos.com/dna/mygg.asp> - Information about genetic genealogy at ancestry.com, and
- \* <http://www.familytreedna.com> - Family Tree DNA, a company that provides testing services.



## Upcoming Events Calendar

Sept. 23, 2002	BAGS Board Meeting at 4:30 pm; University Baptist Church
Sept. 29, 2002	BAGS General Meeting at 5:00 pm; University Baptist Church
Oct. 21, 2002	BAGS Board Meeting at 4:30 pm; University Baptist Church
Oct. 27, 2002	BAGS General Meeting at 5:00 pm; University Baptist Church
Nov 1-2, 2002	Texas State Genealogical Society Conference in Galveston, Texas
Nov. 18, 2002	BAGS Board Meeting at 4:30 pm; University Baptist Church
Nov. 24, 2002	BAGS General Meeting at 5:00 pm; University Baptist Church
Dec. 23, 2002	BAGS Board Meeting at 4:30 pm; University Baptist Church
Dec. 29, 2002	BAGS General Meeting at 5:00 pm; University Baptist Church

Bay Area Genealogical Society  
P.O. Box 891447  
Houston, TX 77289-1447



### Next Meeting

Date: September 29, 2002  
Time: 5:00 P.M.  
Place: University Baptist Church Great Room  
16106 Middlebrook Drive, Houston  
Speaker: Gay E. Carter, Reference/Documents Librarian  
Subject: Using Manuscript Collection for Research

This newsletter is a monthly publication of the Bay Area Genealogical Society. All officers are volunteers. Articles on genealogy are most welcome. Inclusion is based on space available and material is subject to editing. Mail submissions to: BAGS, P.O. Box 891447, Houston, TX 77289-1447 or email to tfrey99@hotmail.com.

We are on the Web!

Check out the BAGS website at:

<http://www.rootsweb.com/~txbags/baygen.html>.



**Deadline for  
October Issue is  
October 5, 2002**